

(CRIED1 . CRIED) 24193

# CRIED ONE DEPARTURE

AL-198 (FAA)

WILLIAM P HOBBY (HOU)  
HOUSTON, TEXAS

D-ATIS  
124.6  
CLNC DEL  
125.45  
CPDLC  
GND CON  
121.9  
HOBBY TOWER  
118.7 256.9  
HOUSTON DEP CON  
132.25 285.425

**TOP ALTITUDE:  
16000**

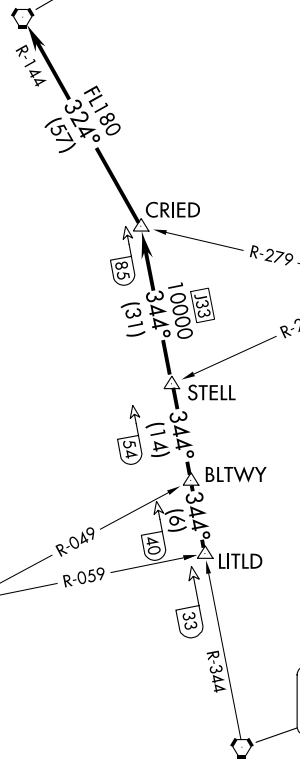
CEDAR CREEK  
114.8 CQY   
Chan 95

LUFKIN  
112.1 LFK   
Chan 58

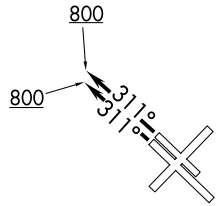
NAVASOTA  
115.9 TNV   
Chan 106

HUMBLE  
116.6 IAH   
Chan 113

NOTE: RADAR required.



**TAKEOFF MINIMUMS**  
Rwys 4, 13L/R, 31L/R: Standard.  
Rwy 22: Standard with minimum climb of 290' per NM to 1500.



(CONTINUED ON FOLLOWING PAGE)

NOTE: Chart not to scale.

# CRIED ONE DEPARTURE

(CRIED1 . CRIED) 07OCT21

HOUSTON, TEXAS  
WILLIAM P HOBBY (HOU)

SC-5, 26 DEC 2024 to 23 JAN 2025

SC-5, 26 DEC 2024 to 23 JAN 2025