

HOODO SEVEN DEPARTURE (RNAV)

SC-5, 26 DEC 2024 to 23 JAN 2025

D-AITS
 124.6
 CLNC DEL
 125.45
 CPDC
 GND CON
 121.9
 HOBBY TOWER
 118.7 256.9
 HOUSTON DEP CON
 127.125 269.075

NOTE: RNAV 1.

NOTE: RADAR required.

NOTE: ATC assigned only.

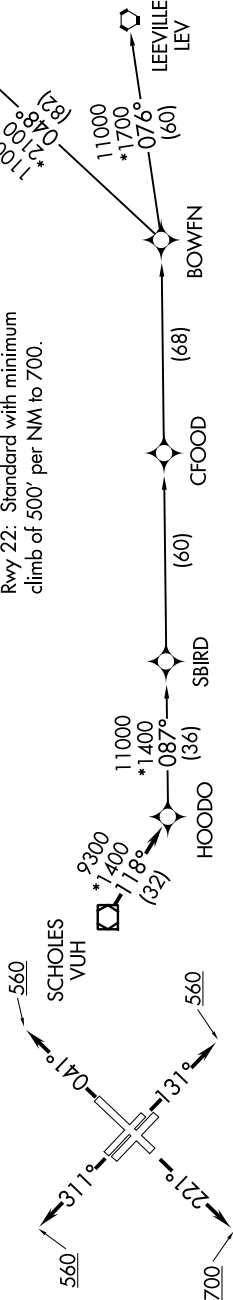
NOTE: DME/DME/IRU or GPS required.

NOTE: For non-GPS equipped aircraft, LCH, ILLA, TBD, and LEV DME's must be operational.

TAKEOFF MINIMUMS

Rwys 4, 13L/R, 31L/R: Standard with minimum climb of 500' per NM to 560.

Rwy 22: Standard with minimum climb of 500' per NM to 700.



TOP ALTITUDE:
16000

DEPARTURE ROUTE DESCRIPTION

TAKEOFF RUNWAY 4: Climb on heading 041° to 560, for RADAR vectors to VUH VOR/DME, thence

TAKEOFF RUNWAYS 13L/R: Climb on heading 131° to 560, for RADAR vectors to VUH VOR/DME, thence

TAKEOFF RUNWAY 22: Climb on heading 221° to 700, for RADAR vectors to VUH VOR/DME, thence

TAKEOFF RUNWAYS 31L/R: Climb on heading 311° to 560, for RADAR vectors to VUH VOR/DME, thence

. . . . on track 118° to HOODO, then on (transition). Maintain 16000.
Expect filed altitude 10 minutes after departure.

- BOWFN TRANSITION (HOODO7.BOWFN)
- CFOOD TRANSITION (HOODO7.CFOOD)
- HARVEY TRANSITION (HOODO7.HRV)
- LEEVILLE TRANSITION (HOODO7.LEV)
- SBIRD TRANSITION (HOODO7.SBIRD)



NOTE: Chart not to scale.

HOODO SEVEN DEPARTURE (RNAV)

SC-5, 26 DEC 2024 to 23 JAN 2025