

LOC/DME I-HUB <b>109.9</b> Chan <b>36</b>	APP CRS <b>041°</b>	Rwy Idg <b>7602</b> TDZE <b>44</b> Apt Elev <b>46</b>
---	------------------------	---

# ILS or LOC RWY 4

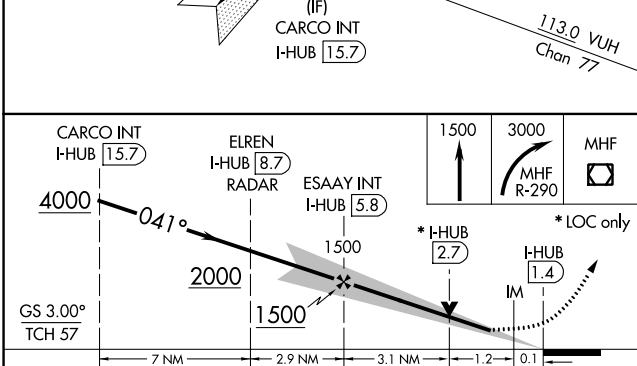
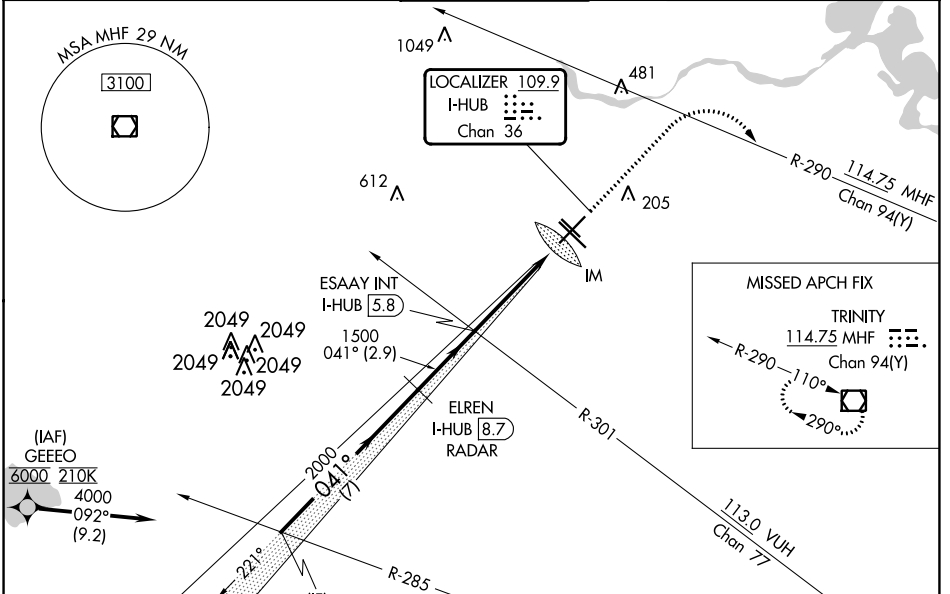
WILLIAM P HOBBY (HOU)

Aircraft not GPS equipped - RADAR required for procedure entry.  
From GEEEO: RNAV 1- GPS required.

**ALSF-2**  
MISSED APPROACH: Climb to 1500 then climbing right turn to 3000 on MHF VOR/DME R-290 to MHF VOR/DME and hold.

**▽** For inop ALSF-2, increase S-ILS 4 Cat E visibility to RVR 4000;  
**▲** S-LOC 4 Cat C/D/E visibility to 1½.

D-ATIS <b>124.6</b>	HOUSTON APP CON <b>120.05 379.1 EAST</b> <b>124.35 316.15 WEST</b>	HOBBY TOWER <b>118.7 256.9</b>	GND CON <b>121.9</b>	CLNC DEL <b>125.45</b>	CPDLC
------------------------	--	-----------------------------------	-------------------------	---------------------------	-------



ELEV 46	TDZE 44
---------	---------

TWR 190

REIL Rwy 31L  
MIRL Rwy 13L-31R  
HIRL Rws 4-22 and 13R-31L  
TDZ/CL Rws 4, 13R and 31L

FAF to MAP 4.4 NM

Knots	60	90	120	150	180
Min:Sec	4:24	2:56	2:12	1:46	1:28

CATEGORY	A	B	C	D	E
S-ILS 4	244/18 200 (200-½)				
S-LOC 4	520/24	476 (500-½)	520/50 476 (500-1)		
<b>C</b> CIRCLING	520-1	474 (500-1)	740-2¼	694 (700-2¼)	860-3 814 (900-3)

SC-5, 26 DEC 2024 to 23 JAN 2025

SC-5, 26 DEC 2024 to 23 JAN 2025