

# KIDDZ FIVE ARRIVAL (RNAV) Transition Routes

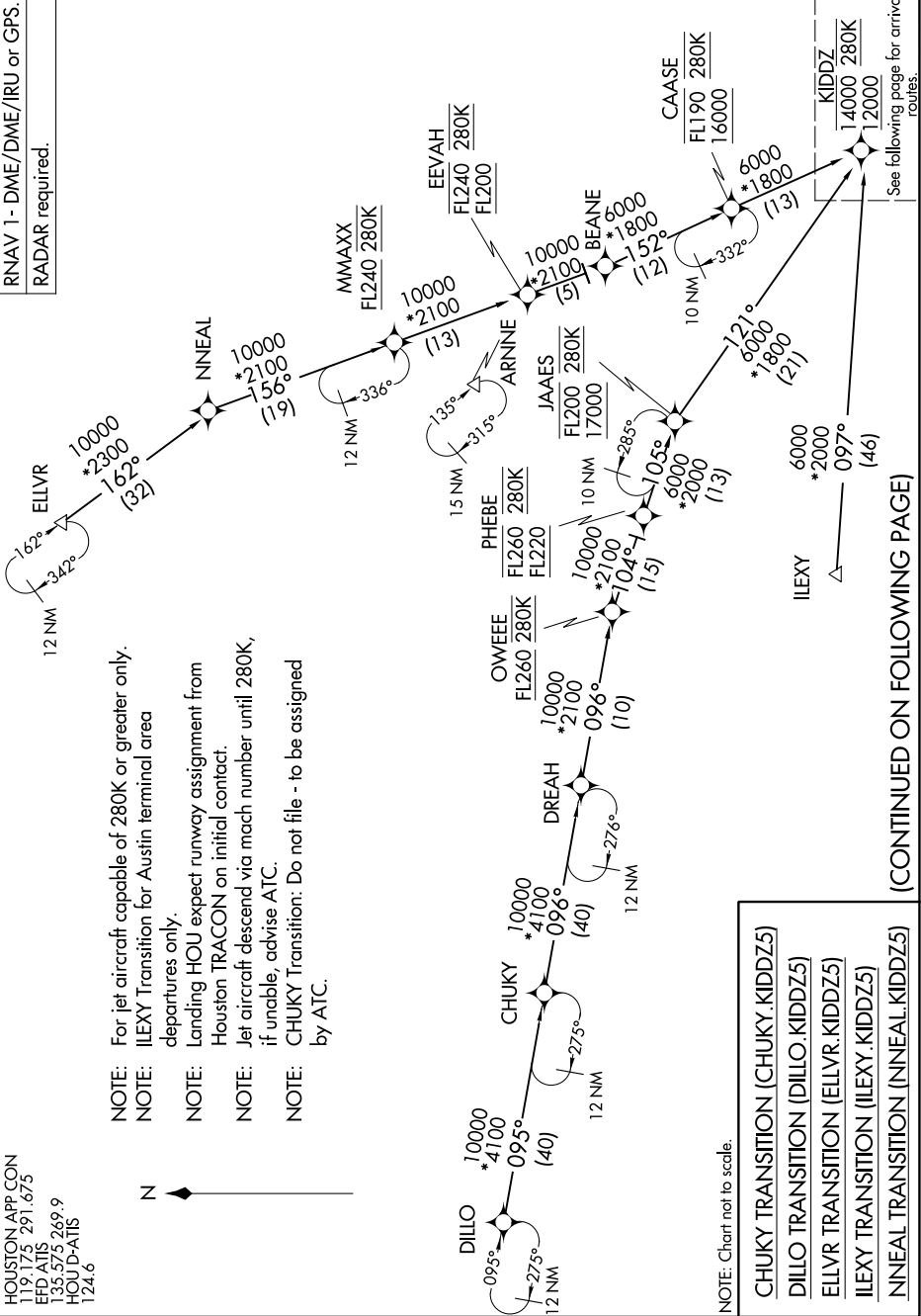
HOUSTON, TEXAS

SC-5, 26 DEC 2024 to 23 JAN 2025

HOUSTON APP CON  
 119.175 291.675  
 EFD-ATIS 291.675  
 135.575 269.9  
 HOU-D-ATIS  
 124.6

RNAV 1- DME/DME/IRU or GPS.  
 RADAR required.

- NOTE: For jet aircraft capable of 280K or greater only.
- NOTE: ILEXY Transition for Austin terminal area departures only.
- NOTE: Landing HOU expect runway assignment from Houston TRACON on initial contact.
- NOTE: Jet aircraft descend via mach number until 280K, if unable, advise ATIS.
- NOTE: CHUKY Transition: Do not file - to be assigned by ATIS.



NOTE: Chart not to scale.

- CHUKY TRANSITION (CHUKY.KIDDZ5)
- DILLO TRANSITION (DILLO.KIDDZ5)
- ELLVR TRANSITION (ELLVR.KIDDZ5)
- ILEXY TRANSITION (ILEXY.KIDDZ5)
- NINEAL TRANSITION (NINEAL.KIDDZ5)

(CONTINUED ON FOLLOWING PAGE)

See following page for arrival routes.

SC-5, 26 DEC 2024 to 23 JAN 2025

# KIDDZ FIVE ARRIVAL (RNAV) Transition Routes

HOUSTON, TEXAS