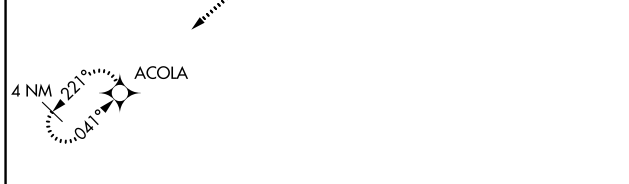
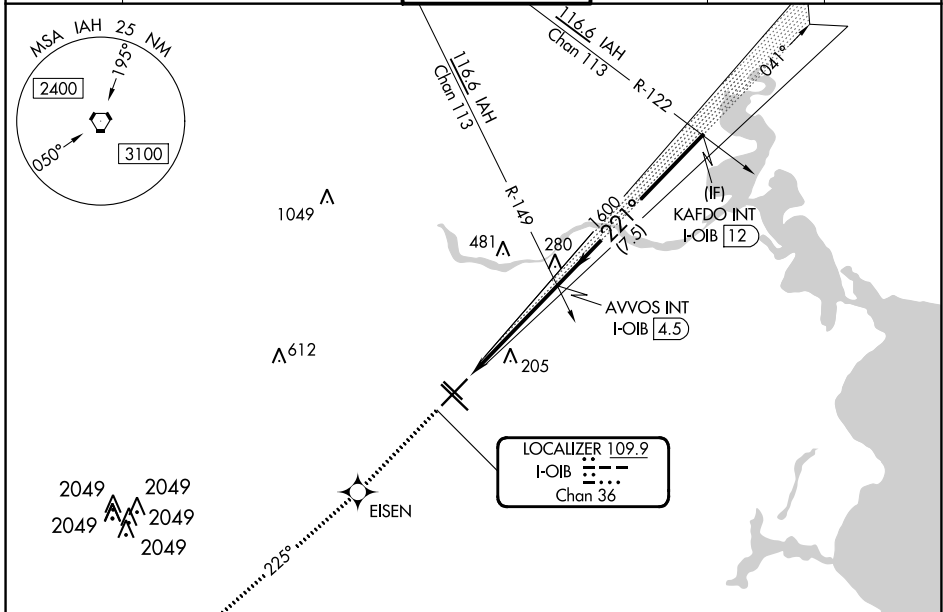


LOC/DME I-OIB 109.9 Chan 36	APP CRS 221°	Rwy Idg 7602 TDZE 41 Apt Elev 46
---	------------------------	---

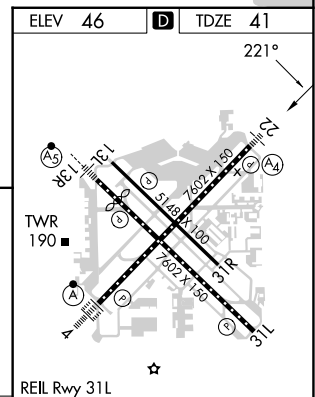
LOC RWY 22
WILLIAM P HOBBY (HOU)

RNAV 1-GPS required. RADAR required for procedure entry.		MALS 	MISSED APPROACH: Climb to 3000 direct EISEN and on track 225° to ACOLA and hold.	
 For inop ALS, increase S-LOC 22 Cat C/D/E visibility to 1 3/8 SM.				

D-ATIS 124.6	HOUSTON APP CON 120.05 379.1 EAST 124.35 316.15 WEST	HOBBY TOWER 118.7 256.9	GND CON 121.9	CLNC DEL 125.45	CPDLC
------------------------	--	-----------------------------------	-------------------------	---------------------------	-------



3000	EISEN	fr 225°	ACOLA	AVVOS INT I-OIB 4.5	KAFDO INT I-OIB 12
------	-------	---------	-------	---------------------	--------------------



CATEGORY	A	B	C	D	E	
S-LOC 22	500-3/4	459 (500-3/4)	500-1	459 (500-1)		
CIRCLING	500-1 454 (500-1)	520-1 474 (500-1)	540-1 1/2 494 (500-1 1/2)	740-2 1/4 694 (700-2 1/4)	820-2 3/4 774 (800-2 3/4)	
	Knots	60	90	120	150	180
	Min:Sec	4:42	3:08	2:21	1:53	1:34

SC-5, 26 DEC 2024 to 23 JAN 2025

SC-5, 26 DEC 2024 to 23 JAN 2025