

WAAS CH 77510 W31A	APP CRS 311°	Rwy Idg 7602 TDZE 43 Apt Elev 46
--	------------------------	---

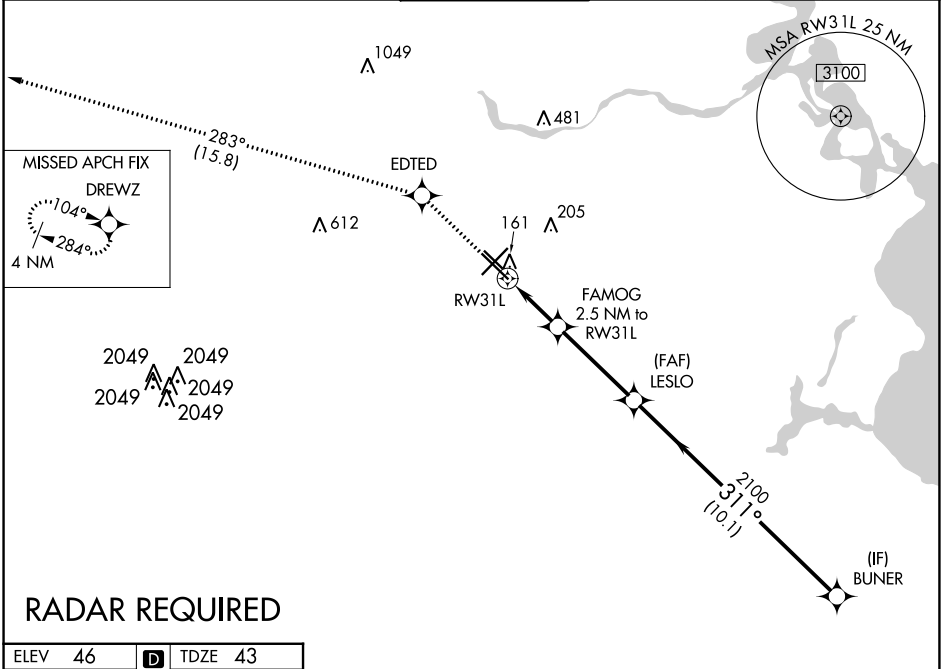
RNAV (GPS) RWY 31L

WILLIAM P HOBBY (HOU)

⚠ For uncompensated Baro-VNAV systems, LNAV/VNAV NA below -1.5°C (5°F) or above 43°C (109°F). DME/DME RNP-0.3 NA.

MISSED APPROACH: Climb to 2000 direct EDTED and on track 283° to DREWZ and hold.

D-ATIS 124.6	HOUSTON APP CON 120.05 379.1 EAST 124.35 316.15 WEST	HOBBY TOWER 118.7 256.9	GND CON 121.9	CLNC DEL 125.45	CPDLC
------------------------	--	-----------------------------------	-------------------------	---------------------------	-------

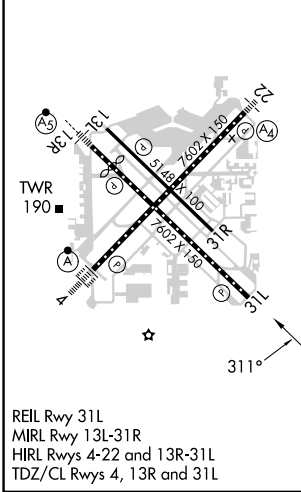


SC-5, 26 DEC 2024 to 23 JAN 2025

SC-5, 26 DEC 2024 to 23 JAN 2025

RADAR REQUIRED

ELEV 46	D	TDZE 43
---------	----------	---------



2000	EDTED	DREWZ	BUNER	
↑	tr 283°			
*LNAV only.				
FAMOG 2.5 NM to RWY 31L				
LESLO 2100				
*1.2 NM to RWY 31L				
*880				
2100				
311°				
4000				
GP 3.00°				
TCH 58				
1.2 NM 1.3 3.8 NM 10.1 NM				
CATEGORY	A	B	C	D
LPV DA	243/40		200 (200-¾)	
LNAV/VNAV DA	323/45		280 (300-⅞)	
LNAV MDA	500/55	457 (500-1)	500-1⅜	457 (500-1⅜)
C CIRCLING	500-1 454 (500-1)	520-1 474 (500-1)	740-2¼	694 (700-2¼)