

# STRYA EIGHT DEPARTURE (RNAV)

D-ATIS  
124.6  
CLNC DEL  
125.45  
CPDLC  
GND CON  
121.9  
HOBBY TOWER  
118.7 256.9  
HOUSTON DEP CON  
132.25 285.425

**TOP ALTITUDE:  
16000**

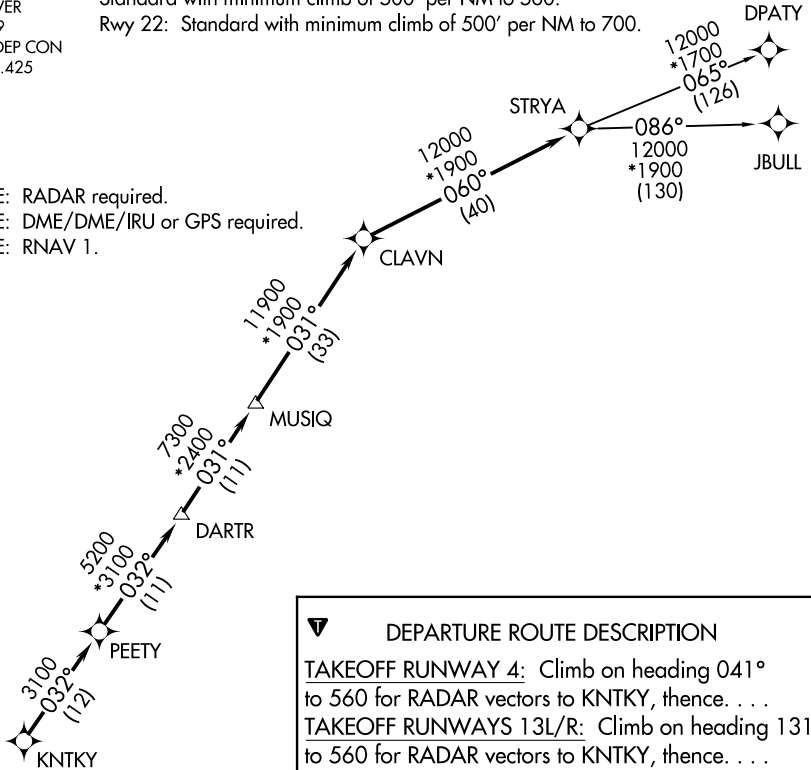
TAKEOFF MINIMUMS

Rwys 4, 13L/R, 31L/R:

Standard with minimum climb of 500' per NM to 560.

Rwy 22: Standard with minimum climb of 500' per NM to 700.

- NOTE: RADAR required.
- NOTE: DME/DME/IRU or GPS required.
- NOTE: RNAV 1.



**DEPARTURE ROUTE DESCRIPTION**

TAKEOFF RUNWAY 4: Climb on heading 041° to 560 for RADAR vectors to KNTKY, then...

TAKEOFF RUNWAYS 13L/R: Climb on heading 131° to 560 for RADAR vectors to KNTKY, then...

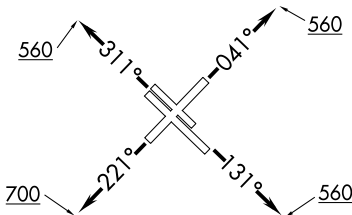
TAKEOFF RUNWAY 22: Climb on heading 221° to 700 for RADAR vectors to KNTKY, then...

TAKEOFF RUNWAYS 31L/R: Climb on heading 311° to 560 for RADAR vectors to KNTKY, then...

... on track 032° to PEETY, then on track 032° to DARTR, then on track 031° to MUSIQ, then on track 031° to CLAVN, then on track 060° to STRYA, then on (transition). Maintain 16000 or as assigned by ATC. Expect filed altitude 10 minutes after departure.

DPATY TRANSITION (STRYA8.DPATY)

JBULL TRANSITION (STRYA8.JBULL)



NOTE: Chart not to scale.

SC-5, 26 DEC 2024 to 23 JAN 2025

SC-5, 26 DEC 2024 to 23 JAN 2025

# STRYA EIGHT DEPARTURE (RNAV)

(STRYA8.STRYA) 07OCT21