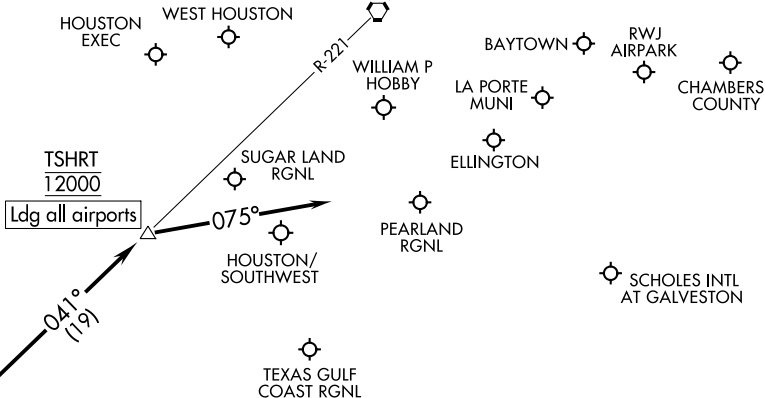


HOUSTON APP CON
119.175 291.675
EFD ATIS
135.575 269.9
HOU D-ATIS
124.6
SGR ATIS ★
118.125
TME ATIS
119.525

HUMBLE
116.6 IAH : : :
Chan 113



TSHRT
12000
Ldg all airports

IAH
154
BELLR
TURBOJETS:
12000 250K

NOTE: RADAR required.
NOTE: DME/DME/IRU or GPS equipped turbojet and turboprop aircraft landing HOU must file the BELLR (RNAV) STAR.
NOTE: DME required.

NOTE: Chart not to scale.

ARRIVAL ROUTE DESCRIPTION

... from over BELLR on IAH R-221 to cross TSHRT at 12000. From TSHRT fly heading 075° for vectors to final approach course.