

(DAWNN1.DAWNN) 24361
DAWNN ONE DEPARTURE

AL-203 (FAA)

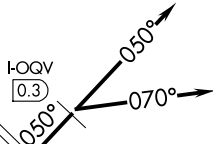
INDIANAPOLIS INTL (IND)
 INDIANAPOLIS, INDIANA

D-ATIS 134.25
 CLNC DEL
 128.75 251.1
 CPDLC
 GND CON
 121.9
 INDY TOWER
 120.9 251.1
 INDIANAPOLIS DEP CON
 124.95 317.8 (EAST)
 119.05 317.8 (WEST)

**TOP ALTITUDE:
 ASSIGNED BY
 ATC**

BRICKYARD
 116.3 VHP
 Chan 110

LOCALIZER
 111.75 I-UZK
 Chan 54(Y)

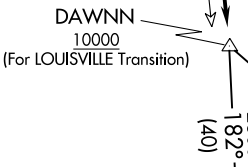
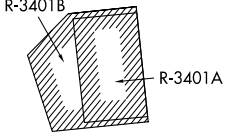
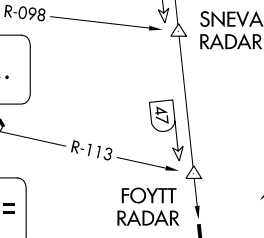


LOCALIZER
 111.15 I-OQV
 Chan 48(Y)

LOCALIZER
 111.15 I-FVJ
 Chan 48(Y)

TERRE HAUTE
 115.3 TTH
 Chan 100

HOOSIER
 110.2 OOM
 Chan 39



LOUISVILLE
 114.8 IU
 Chan 95

MYSTIC
 108.2 MYS

TAKEOFF MINIMUMS:
 Rwy 5L/R, 14, 23L/R, 32: Standard.

- NOTE: RADAR required.
- NOTE: Select appropriate localizer/DME frequency/channel prior to departure.
- NOTE: Turbojets accelerate to 250K until reaching 10000, if unable advise ATC.
- NOTE: Assigned to aircraft with a requested altitude of 11000 or above.

(NARRATIVE ON FOLLOWING PAGE)

NOTE: Chart not to scale.

EC-2, 26 DEC 2024 to 23 JAN 2025

EC-2, 26 DEC 2024 to 23 JAN 2025

DAWNN ONE DEPARTURE
 (DAWNN1.DAWNN) 07DEC17

INDIANAPOLIS, INDIANA
 INDIANAPOLIS INTL (IND)