

LOC/DME I-FVJ 111.15 Chan 48 (Y)	APP CRS 230°	Rwy Idg 10000 TDZE 790 Apt Elev 796
--	------------------------	--

ILS RWY 23L (SA CAT II)

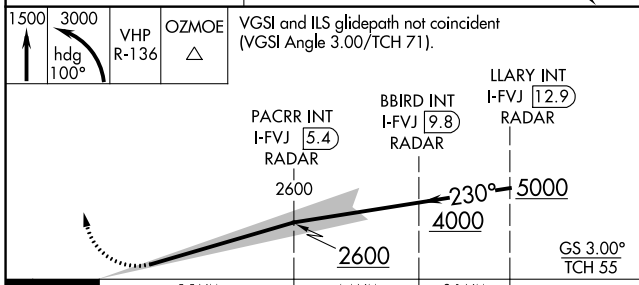
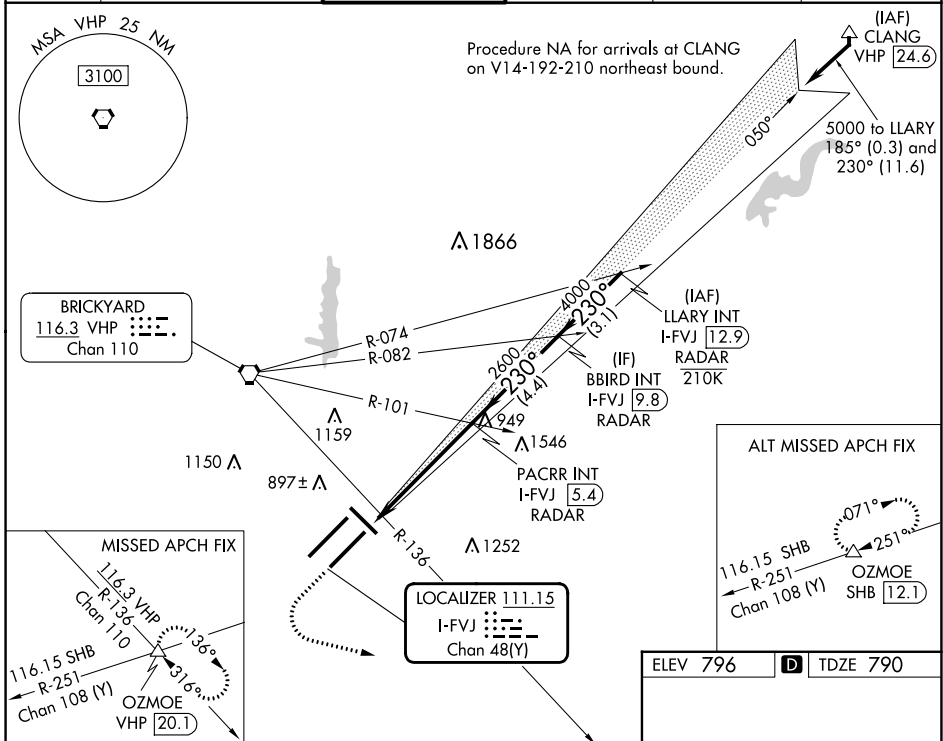
INDIANAPOLIS INTL (IND)

Simultaneous approach authorized. Requires specific OPSPEC, MSPEC, or LOA approval.

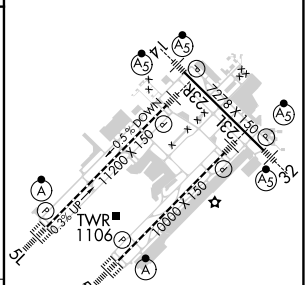
MALS R-136

MISSED APPROACH: Climb to 1500 then climbing left turn to 3000 on heading 100° and on VHP VORTAC R-136 to OZMOE INT/VHP 20.1 DME and hold.

D-ATIS 134.25	INDIANAPOLIS APP CON 128.175 317.8	INDY TOWER 120.9 251.1	GND CON 121.9	CLNC DEL 128.75 251.1	CPDLC
-------------------------	--	----------------------------------	-------------------------	---------------------------------	-------



ELEV 796	D TDZE 790
----------	-------------------



1033	5.5 NM	B	4.4 NM	C	3.1 NM	D
CATEGORY	A	B	C	D		
S-ILS 23L	RA 105/12		100 DA 890			

SA CATEGORY II ILS- SPECIAL AIRCREW & AIRCRAFT CERTIFICATION REQUIRED

HIRL all Rwys
TDZ/CL Rwys 5L and 5R

EC-2, 26 DEC 2024 to 23 JAN 2025

EC-2, 26 DEC 2024 to 23 JAN 2025