

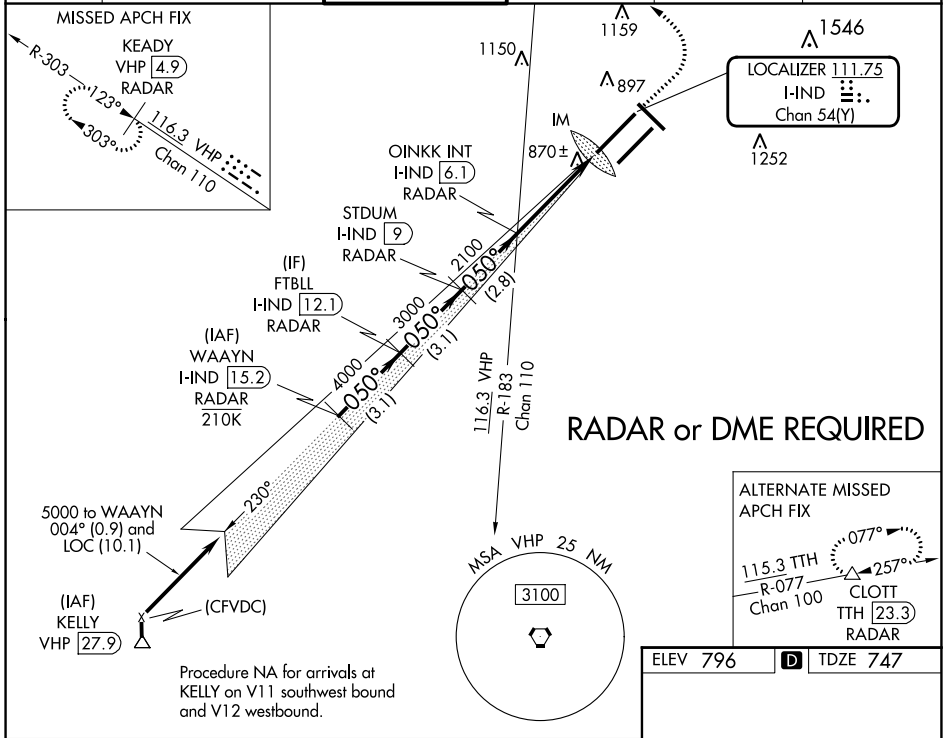
LOC/DME I-IND 111.75 Chan 54 (Y)	APP CRS 050°	Rwy Idg 11200 TDZE 747 Apt Elev 796
---	------------------------	--

ILS RWY 5L (CAT II & III)

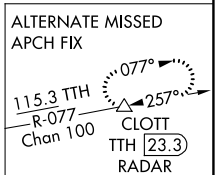
INDIANAPOLIS INTL (IND)

⚠ Simultaneous approach authorized. CAT III: Localizer not suitable for electronic rollout guidance. DME or RADAR required.	ALSF-2 	MISSED APPROACH: Climb to 1700 then climbing left turn to 3000 direct VHP VORTAC then on VHP VORTAC R-303 to KEADY/VHP 4.9 DME/RADAR and hold.
---	------------	--

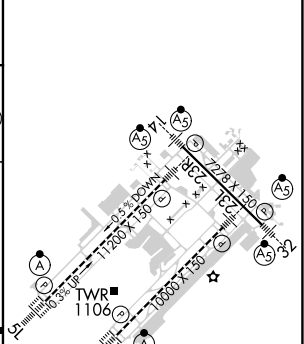
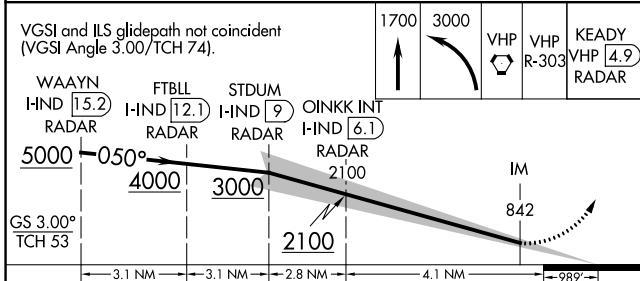
D-ATIS 134.25	INDIANAPOLIS APP CON 128.175 317.8	INDY TOWER 120.9 251.1	GND CON 121.9	CLNC DEL 128.75 251.1	CPDLC
-------------------------	--	----------------------------------	-------------------------	---------------------------------	-------



RADAR or DME REQUIRED



ELEV 796	D	TDZE 747
----------	----------	----------



CATEGORY	A	B	C	D
S-ILS 5L	CAT II RA 113/12 100 DA 847			
S-ILS 5L	CAT III RVR 07			

CATEGORY II & III ILS - SPECIAL AIRCREW & AIRCRAFT CERTIFICATION REQUIRED

HIRL all Rwws
TDZ/CL Rwws 5L and 5R

EC-2, 26 DEC 2024 to 23 JAN 2025

EC-2, 26 DEC 2024 to 23 JAN 2025