

# INDY TWO DEPARTURE

AL-203 (FAA)

INDIANAPOLIS INTL (IND)  
INDIANAPOLIS, INDIANA

D-ATIS 134.25  
CLNC DEL  
128.75 251.1  
CPDLC  
GND CON  
121.9  
INDY TOWER  
120.9 251.1  
INDIANAPOLIS DEP CON  
124.95 317.8 (EAST)  
119.05 317.8 (WEST)

RADAR required.

**TOP ALTITUDE:**  
**(JETS) 5000**  
**(PROPS) 3000**

BOILER  
115.1 BVT  
Chan 98

MARION  
108.6 MZZ  
Chan 23

ROSEWOOD  
117.5 ROD  
Chan 122

CHAMPAIGN  
115.75 CMI  
Chan 104(Y)

LOCALIZER  
111.75 I-UZK  
Chan 54(Y)

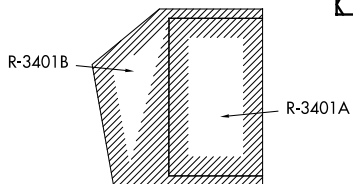
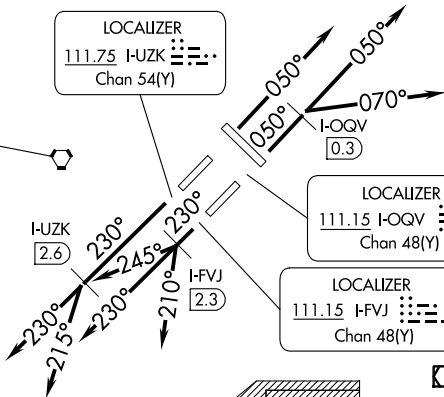
BRICKYARD  
116.3 VHP  
Chan 110

LOCALIZER  
111.15 I-OQV  
Chan 48(Y)

DAYTON  
114.5 DGN  
Chan 92

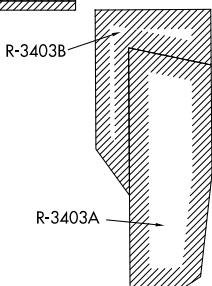
TERRE HAUTE  
115.3 TTH  
Chan 100

LOCALIZER  
111.15 I-FVJ  
Chan 48(Y)

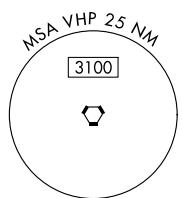


SHELBYVILLE  
116.15 SHB  
Chan 108 (Y)

HOOSIER  
110.2 OOM  
Chan 39



POCKET CITY  
113.3 PXV  
Chan 80



**TAKEOFF MINIMUMS:**

Rwy 5L/R, 14, 23L/R, 32: Standard.

NOTE: Select appropriate localizer/DME frequency/channel prior to departure.  
NOTE: Jet aircraft accelerate to 250K until reaching 10000. If unable advise ATC.

(CONTINUED ON FOLLOWING PAGE)

NOTE: Chart not to scale.

EC-2, 26 DEC 2024 to 23 JAN 2025

EC-2, 26 DEC 2024 to 23 JAN 2025