

MEARZ SEVEN DEPARTURE

INDIANAPOLIS, INDIANA

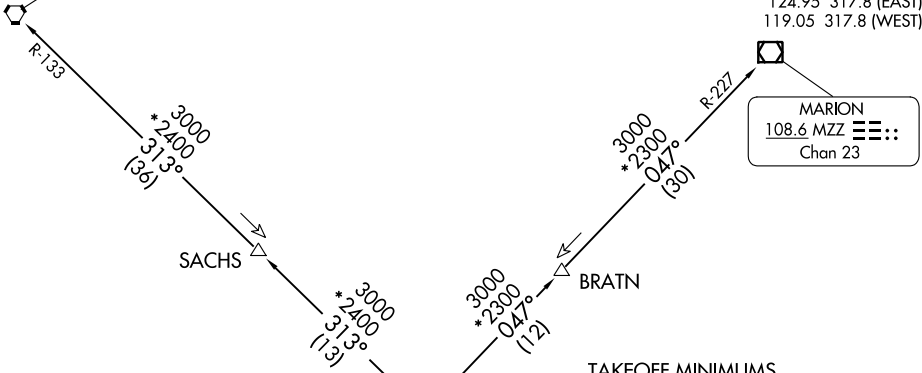
TOP ALTITUDE:
(JETS) 5000
(PROPS) 3000

RADAR required.

D-ATIS 134.25
CLNC DEL
128.75 251.1
CPDLC
GND CON
121.9
INDY TOWER
120.9 251.1
INDIANAPOLIS DEP CON
124.95 317.8 (EAST)
119.05 317.8 (WEST)

BOILER
115.1 BVT
Chan 98

MARION
108.6 MZZ
Chan 23



TAKEOFF MINIMUMS

Rwy 5L/R, 14, 23L/R, 32: Standard.

- NOTE: Turbojets accelerate to 250K until reaching 10000, if unable advise ATC.
- NOTE: Assigned to aircraft with a requested altitude of 11000 or above.
- NOTE: Select appropriate localizer/DME frequency/channel prior to departure.

BRICKYARD
116.3 VHP
Chan 110

LOCALIZER
111.75 I-UZK
Chan 54(Y)

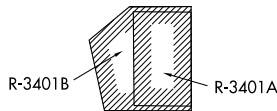
I-OQV
0.3

LOCALIZER
111.15 I-OQV
Chan 48(Y)

I-UZK
2.6

I-FVJ
2.3

LOCALIZER
111.15 I-FVJ
Chan 48(Y)



NOTE: Chart not to scale.

(NARRATIVE ON FOLLOWING PAGE)

EC-2, 26 DEC 2024 to 23 JAN 2025

EC-2, 26 DEC 2024 to 23 JAN 2025

MEARZ SEVEN DEPARTURE

(MEARZ7.MEARZ) 19MAY22

INDIANAPOLIS, INDIANA
INDIANAPOLIS INTL (IND)