

WAAS CH <b>45706</b> <b>W05A</b>	APP CRS <b>050°</b>	Rwy Idg <b>11200</b> TDZE <b>747</b> Apt Elev <b>796</b>
--	------------------------	--

# RNAV (GPS) Y RWY 5L

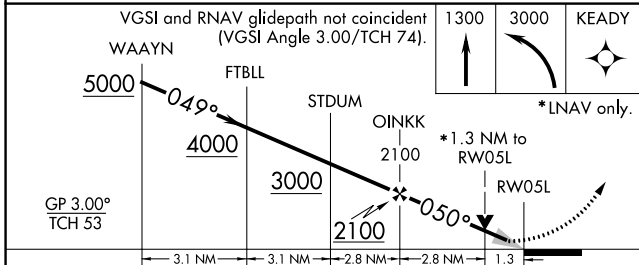
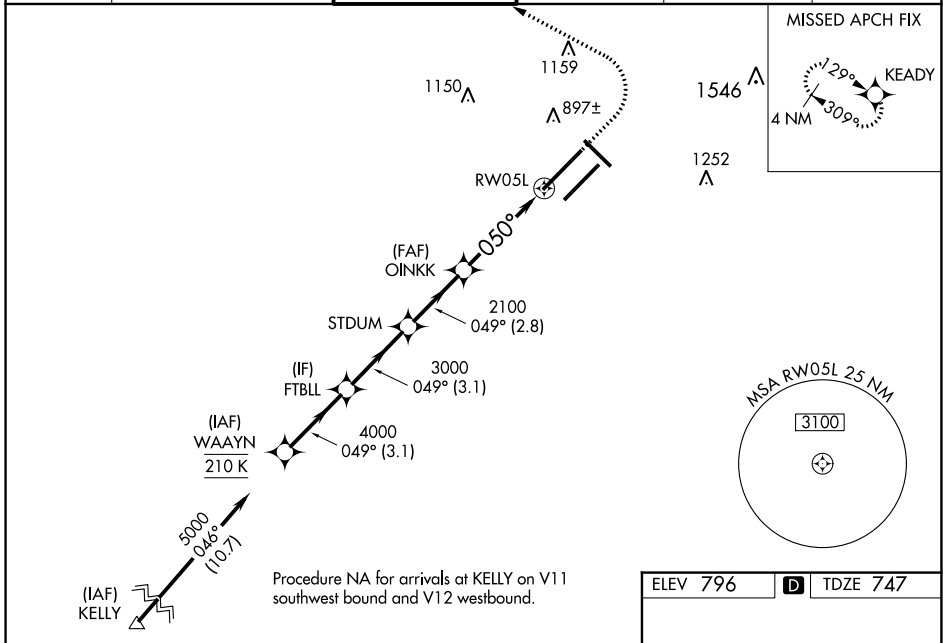
INDIANAPOLIS INTL (IND)

**T** **A** For uncompensated Baro-VNAV systems, LNAV/VNAV NA below -18°C (0°F) or above 54°C (130°F). DME/DME RNP-0.3 NA. Simultaneous approach authorized. LNAV procedure NA during simultaneous operations. Use of FD or AP providing RNAV track guidance required during simultaneous operations. For inoperative ALS, increase LNAV/VNAV all Cats visibility to 1¼ SM and increase LNAV Cat C/D visibility to 1¾ SM.

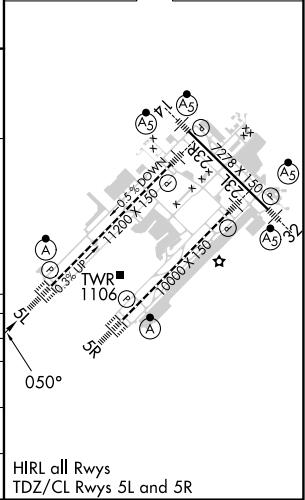
ALS-F-2

MISSED APPROACH: Climb to 1300 then climbing left turn to 3000 direct KEADY and hold.

D-ATIS <b>134.25</b>	INDIANAPOLIS APP CON <b>128.175 317.8</b>	<b>INDY TOWER</b> <b>120.9 251.1</b>	GND CON <b>121.9</b>	CLNC DEL <b>128.75 251.1</b>	CPDLC
-------------------------	--	---	-------------------------	---------------------------------	-------



ELEV 796	<b>D</b> TDZE 747
----------	-------------------



CATEGORY	A	B	C	D
LPV DA	947/18 200 (200-½)			
LNAV/VNAV DA	1136/45 389 (400-¾)			
LNAV MDA	1220/24 473 (500-½)	1220/50 473 (500-1)		
<b>C</b> CIRCLING	1420-1 624 (700-1)	1420-1¾ 624 (700-¾)	1560-2½ 764 (800-2½)	

HIRL all Rwys  
TDZ/CL Rws 5L and 5R

EC-2, 26 DEC 2024 to 23 JAN 2025

EC-2, 26 DEC 2024 to 23 JAN 2025