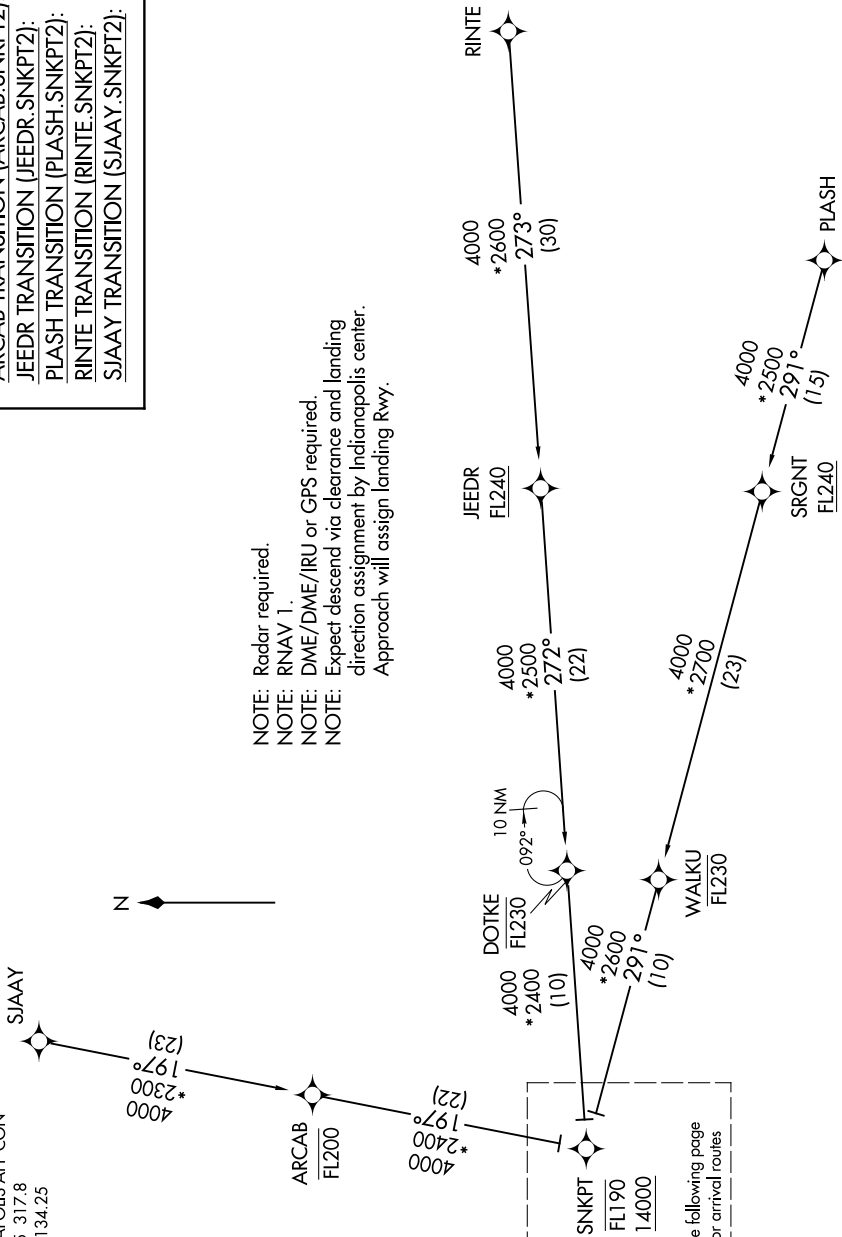


ARCAB TRANSITION (ARCAB.SNKPT2):  
 JEEDR TRANSITION (JEEDR.SNKPT2):  
 PLASH TRANSITION (PLASH.SNKPT2):  
 RINTE TRANSITION (RINTE.SNKPT2):  
 SJAAY TRANSITION (SJAAY.SNKPT2):

NOTE: Radar required.  
 NOTE: RNAV 1.  
 NOTE: DME/DME/IRU or GPS required.  
 NOTE: Expect descend via clearance and landing  
 direction assignment by Indianapolis center.  
 Approach will assign landing Rwy.

EC-2, 26 DEC 2024 to 23 JAN 2025

INDIANAPOLIS APP CON  
 128.175 317.8  
 D-ATIS 134.25



(CONTINUED ON FOLLOWING PAGE)

NOTE: Chart not to scale.

EC-2, 26 DEC 2024 to 23 JAN 2025