

JACKSONVILLE, FLORIDA

RNAV (GPS) Z RWY 28

WAAS CH 46924 W28A	APCH CRS 276°	Rwy ldg TDZE Arpt Elev	9003 13 23
---------------------------------	-------------------------	------------------------------	---------------------------------------

-(USN)

JACKSONVILLE NAS (TOWERS FLD) (KNIP)

RNP APCH

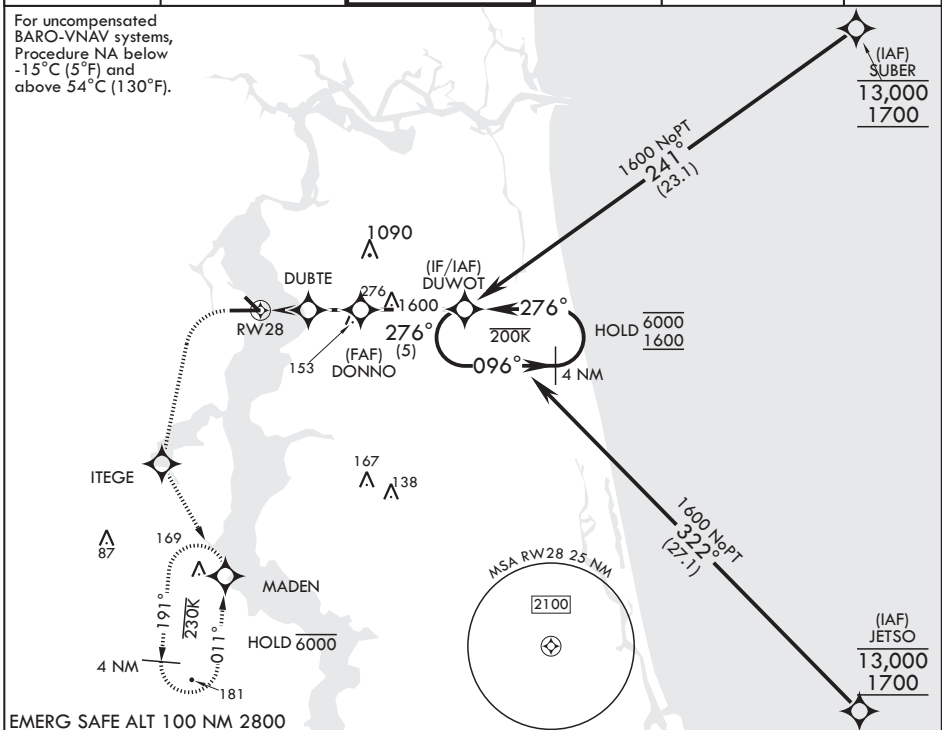
▼ * When ALS inop, increase CAT BCD to 7/8 mile.
** When ALS inop, increase CAT AB vis to 1 mile, CAT CD vis to 1 1/8 miles.



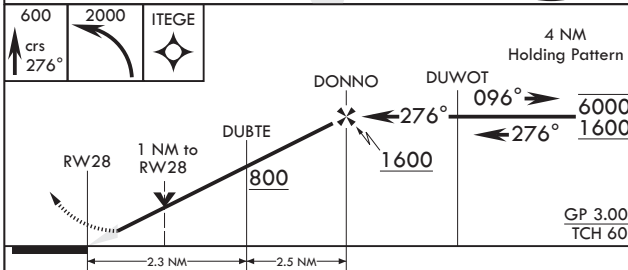
MISSED APPROACH: Climb to 600 then climbing left turn to 2000 direct ITEGE, track 156° to MADEN and hold.

ATIS 124.35 290.425	APP CON/DEP CON 127.775 377.075	TOWER 125.15 (CTAF) 340.2	GND CON 128.6 336.4	CLNC DEL 134.775 353.675	ASR/PAR
-------------------------------	---	-------------------------------------	-------------------------------	------------------------------------	---------

For uncompensated BARO-VNAV systems, Procedure NA below -15°C (5°F) and above 54°C (130°F).

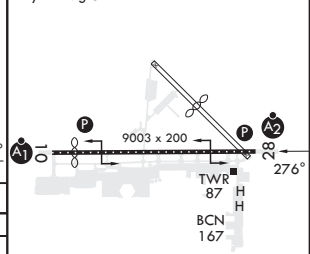


EMERG SAFE ALT 100 NM 2800



ELEV 23	TDZE 13
---------	---------

Rwy 10 ldg 8006'
Rwy 14 ldg 3244'



CATEGORY	A		B		C		D	
LPV DA	213-¾		200		(200-¾)			
LNAV/VNAV DA*	263-¾	274-¾	282-¾	293-¾	250 (300-¾)	261 (300-¾)	269 (300-¾)	280 (300-¾)
LNAV MDA**	400-¾	387 (400-¾)	400-⅙	387 (400-¾)				
Ⓢ CIRCLING	500-1	477 (500-1)	560-1½	780-2½	537 (600-1½)	757 (800-2½)	HIRL Rwy 10-28	

JACKSONVILLE, FLORIDA

30°14'N - 81°41'W

JACKSONVILLE NAS (TOWERS FLD) (KNIP)

Amdt 1 03NOV22

RNAV (GPS) Z RWY 28

SE-3, 26 DEC 2024 to 23 JAN 2025

SE-3, 26 DEC 2024 to 23 JAN 2025