

HI-TACAN X RWY 8

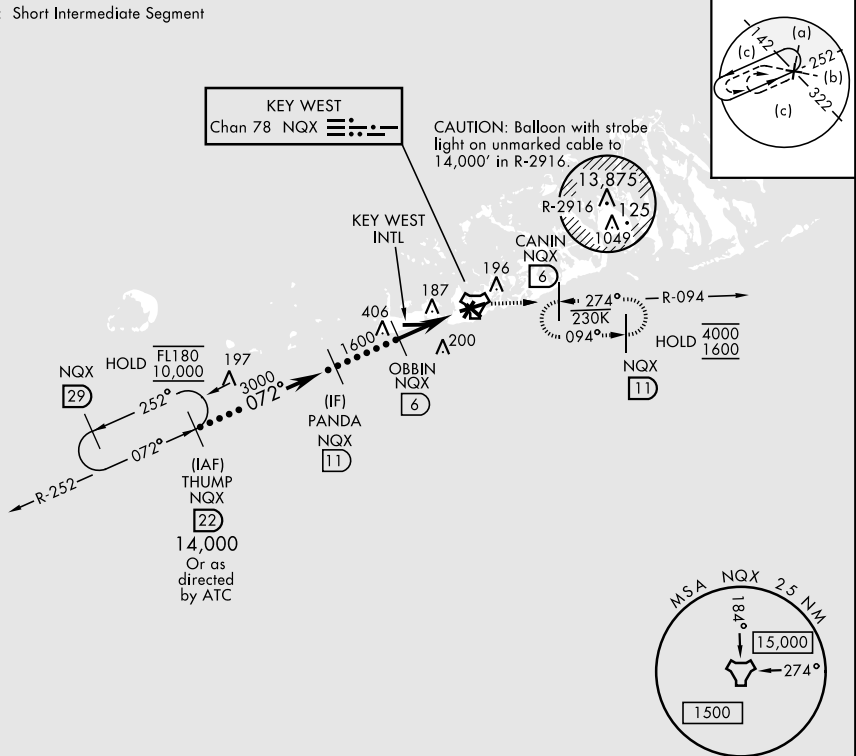
TACAN NQX Chan 78	APCH CRS 072°	Rwy ldg TDZE Arprt Elev	10,001 4 6
----------------------	------------------	-------------------------------	------------------

AL-214 [USN] KEY WEST NAS (BOCA CHICA FLD) (KNQX)

RADAR required * When ALS inop, increase vis to 1 1/4 miles.	ALSF-1 	MISSED APPROACH: Climb to 1600 via R-252 to NQX TACAN then via R-094 to CANIN (NQX R-094/6 DME) and hold.
---	------------	---

ATIS * 307.025	NAVY KEY WEST APP CON 124.025 313.7	NAVY KEY WEST TOWER * 118.575 340.25	GND CON 121.7 336.45	CLNC DEL 121.2 357.4	ASR/PAR
-------------------	--	---	-------------------------	-------------------------	---------

CAUTION: Short Intermediate Segment

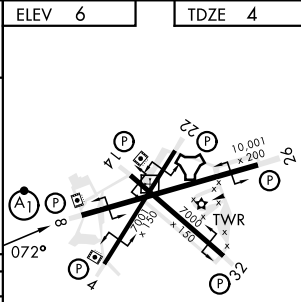


SE-3, 26 DEC 2024 to 23 JAN 2025

SE-3, 26 DEC 2024 to 23 JAN 2025

EMERG SAFE ALT 100 NM 15,000

THUMP R-252 22	PANDA 11	OBBIN 6	TACAN	ZALVO 1.1	ELEV 6	TDZE 4
14,000 Or as directed by ATC	3000	1600	2.97° TCH 44	4.9 NM	1600 NQX R-252	1500 MSA NQX 2.5 NM
CATEGORY	C	D	E			
S-8 *	440-3/4	436	(500-3/4)			
CIRCLING	500-1 1/2 494 (500-1 1/2)	560-2	554 (600-2)			



HI-TACAN X RWY 8