

KEY WEST, FLORIDA

# HI-TACAN Z RWY 32

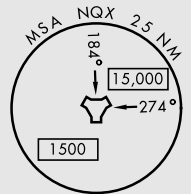
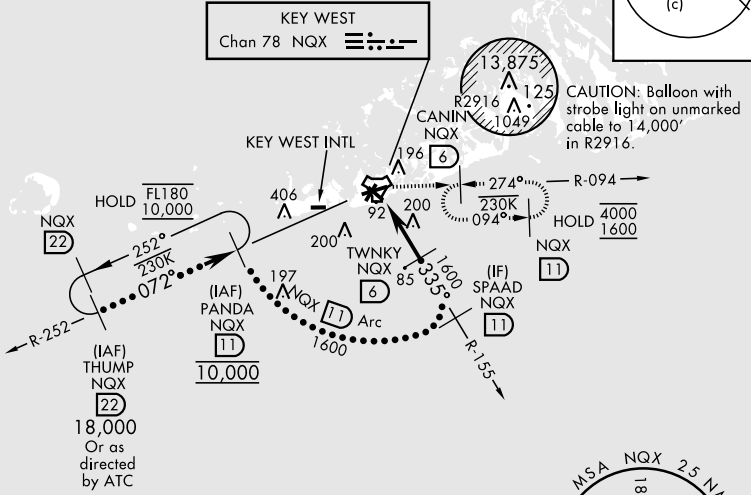
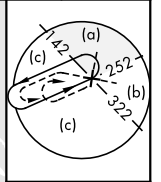
TACAN NQX Chan <b>78</b>	APCH CRS <b>335°</b>	Rwy ldg TDZE <b>7000</b> <b>4</b> Arpt Elev <b>6</b>
--------------------------	----------------------	--

AL-214 [USN] KEY WEST NAS (BOCA CHICA FLD) (KNQX)

RADAR required	MISSED APPROACH: Climb to 1600 via NQX TACAN R-155 to NQX, then climbing right turn to CANIN and hold.
----------------	--

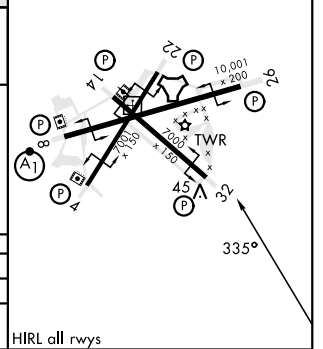
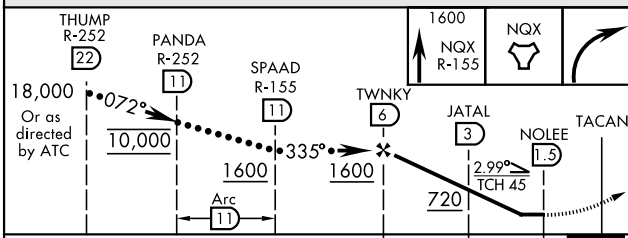
ATIS ★ <b>307.025</b>	NAVY KEY WEST APP CON <b>124.025 313.7</b>	NAVY KEY WEST TOWER ★ <b>118.575 340.25</b>	GND CON <b>121.7 336.45</b>	CLNC DEL <b>121.2 357.4</b>	ASR/PAR
-----------------------	--	---	-----------------------------	-----------------------------	---------

CAUTION: Short Intermediate Segment



EMERG SAFE ALT 100 NM 15,000

ELEV 6	TDZE 4
--------	--------



CATEGORY	C	D	E
S-32	360-1	356	(400-1)
CIRCLING	500-1½ 494 (500-1½)	560-2	554 (600-2)

HIRL all rwys

KEY WEST, FLORIDA 24°34'N-81°41'W KEY WEST NAS (BOCA CHICA FLD) (KNQX)

Amdt 4 23FEB23

# HI-TACAN Z RWY 32

SE-3, 26 DEC 2024 to 23 JAN 2025

SE-3, 26 DEC 2024 to 23 JAN 2025