

KEY WEST, FLORIDA

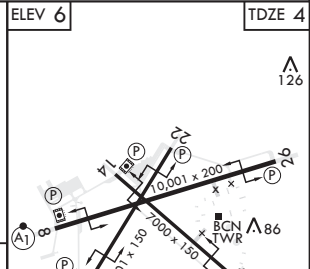
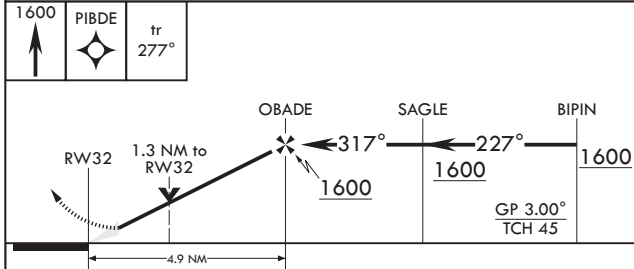
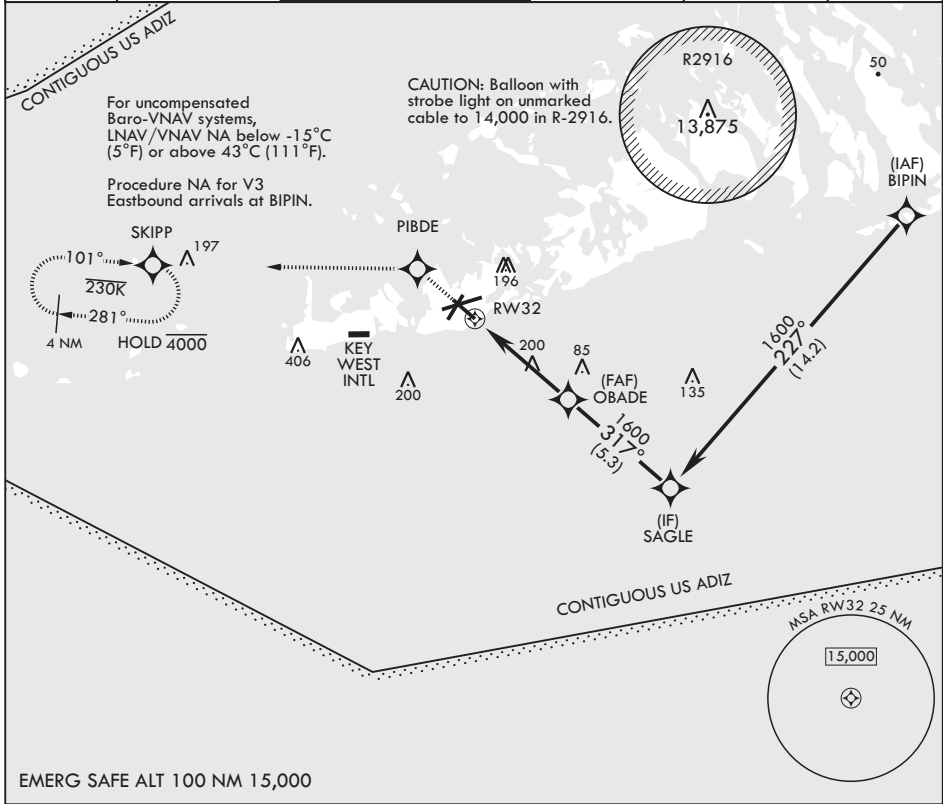
# RNAV (GPS) RWY 32

APCH CRS	Rwy Idg	<b>7000</b>
<b>317°</b>	TDZE	<b>4</b>
	Arprt Elev	<b>6</b>

AL-214 (USN) KEY WEST NAS (BOCA CHICA FLD) (KNQX)

RNP APCH MISSED APPROACH: (Do not exceed 230 KIAS until PIBDE.) Climb to 1600 direct PIBDE, track 277° to SKIPP and hold, continue climb-in-hold to 1600.

ATIS★ <b>307.025</b>	APP CON <b>124.025 313.7</b>	NAVY KEY WEST TOWER★ <b>118.575 340.25</b>	GND CON <b>121.7 336.45</b>	CLNC DEL <b>121.2 357.4</b>	ASR/PAR
-------------------------	---------------------------------	-----------------------------------------------	--------------------------------	--------------------------------	---------



CATEGORY	A	B	C	D
LNAV/VNAV DA	254-¾		250	(300-¾)
LNAV MDA	460-1	456 (500-1)	460-1½	456 (500-1½)
✪ CIRCLING	460-1 454 (500-1)	500-1 494 (500-1)	500-1½ 494 (500-1½)	560-2 554 (600-2)

HIRL all Rwys

KEY WEST, FLORIDA  
Amdt 2 23FEB23

24°34'N - 81°41'W

KEY WEST NAS (BOCA CHICA FLD) (KNQX)

# RNAV (GPS) RWY 32

SE-3, 26 DEC 2024 to 23 JAN 2025

SE-3, 26 DEC 2024 to 23 JAN 2025