

KEY WEST, FLORIDA

TACAN Y RWY 32

TACAN NQX Chan 78	APCH CRS 335°	Rwy Idg TDZE Arprt Elev 7000 4 6
-----------------------------	-------------------------	--

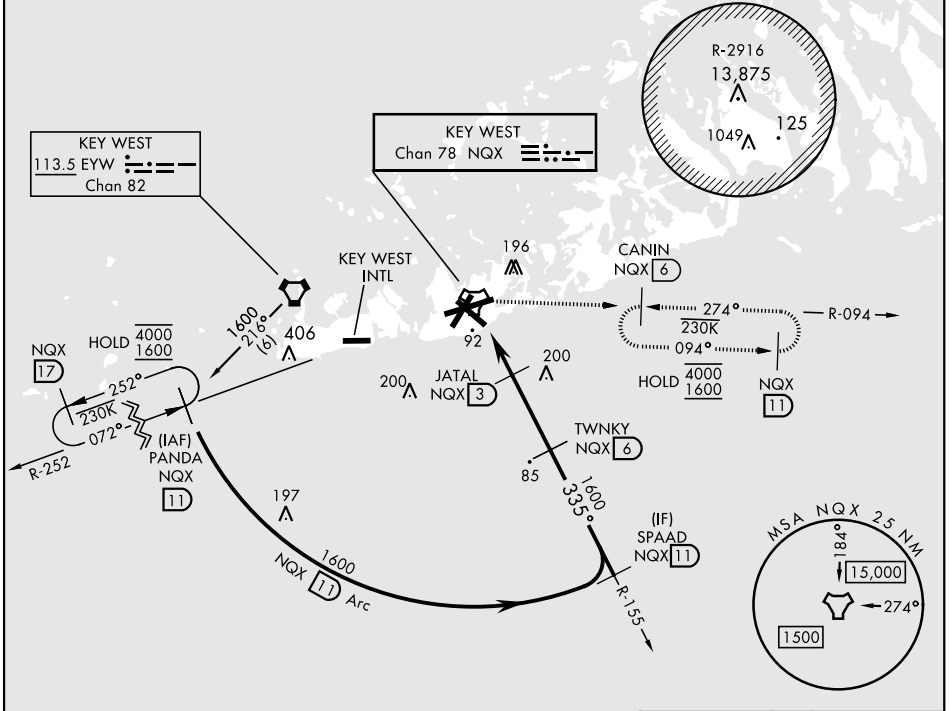
AL-214 [USN] KEY WEST NAS (BOCA CHICA FLD) (KNQX)

▼ MISSED APPROACH: Climb to 500. Then climbing right turn to 1600, intercept NQX R-094 to CANIN (NQX R-094/6 DME) and hold.

ATIS ★ 307.025	NAVY KEY WEST APP CON 124.025 313.7	NAVY KEY WEST TOWER ★ 118.575 340.25	GND CON 121.7 336.45	CLNC DEL 121.2 357.4	ASR/PAR
--------------------------	---	--	--------------------------------	--------------------------------	---------

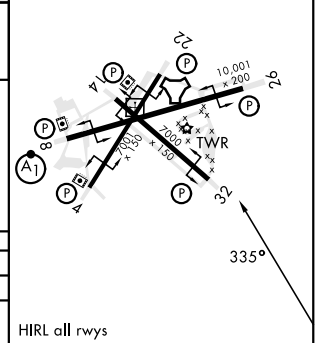
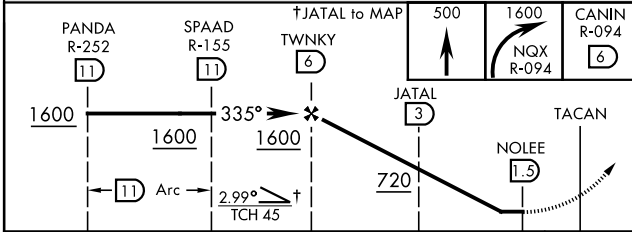
CAUTION: Short Intermediate Segment

CAUTION: Balloon with strobe light on unmarked cable to 14,000 in R-2916.



EMERG SAFE ALT 100 NM 15,000

ELEV 6	TDZE 4
--------	--------



CATEGORY	A	B	C	D
S-32	360-1	356	(400-1)	
CIRCLING	440-1 434 (500-1)	500-1 494 (500-1)	500-1½ 494 (500-1½)	560-2 554 (600-2)
HIRL all rwys				

KEY WEST, FLORIDA
Orig 23FEB23

24°34'N-81°41'W KEY WEST NAS (BOCA CHICA FLD) (KNQX)

TACAN Y RWY 32

SE-3, 26 DEC 2024 to 23 JAN 2025

SE-3, 26 DEC 2024 to 23 JAN 2025