

KEY WEST, FLORIDA

VOR/DME RWY 26

EYW VORTAC 113.5 Chan 82	APCH CRS 270°	Rwy ldg 10,001 TDZE 6 Arprt Elev 6
--	-------------------------	---

AL-214 [USN]

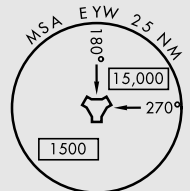
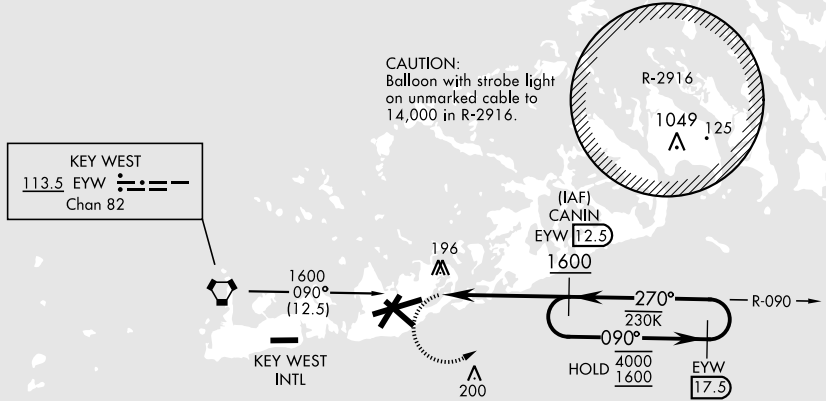
KEY WEST NAS (BOCA CHICA FLD) (KNQX)

RADAR required

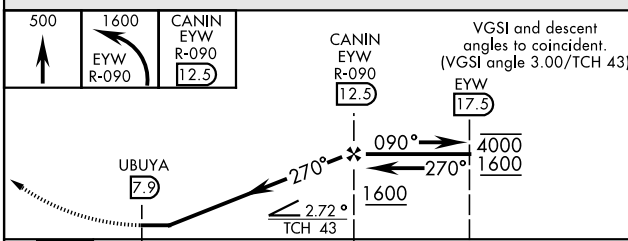
MISSED APPROACH: Climb to 500, then climbing left turn to 1600 to intercept EYW VORTAC R-090 to CANIN and hold.

ATIS ★ 307.025	NAVY KEY WEST APP CON 124.025 313.7	NAVY KEY WEST TOWER ★ 118.575 340.25	GND CON 121.7 336.45	CLNC DEL 121.2 357.4	ASR/PAR
--------------------------	---	--	--------------------------------	--------------------------------	---------

CAUTION: Final approach course crosses the extended runway centerline 5018' from threshold.

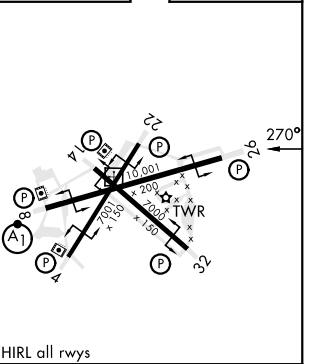


EMEG SAFE ALT 100 NM 15,000



ELEV 6	TDZE 6
--------	--------

CATEGORY	A	B	C	D
S-26	460-1	454 (500-1)	460-1 1/8	454 (500-1 3/8)
CIRCLING	460-1 454 (500-1)	500-1 494 (500-1)	500-1 1/2 494 (500-1 1/2)	560-2 554 (600-2)



KEY WEST, FLORIDA
Amdt 4 23FEB23

24°34'N-81°41'W

KEY WEST NAS (BOCA CHICA FLD) (KNQX)

VOR/DME RWY 26

SE-3, 26 DEC 2024 to 23 JAN 2025

SE-3, 26 DEC 2024 to 23 JAN 2025