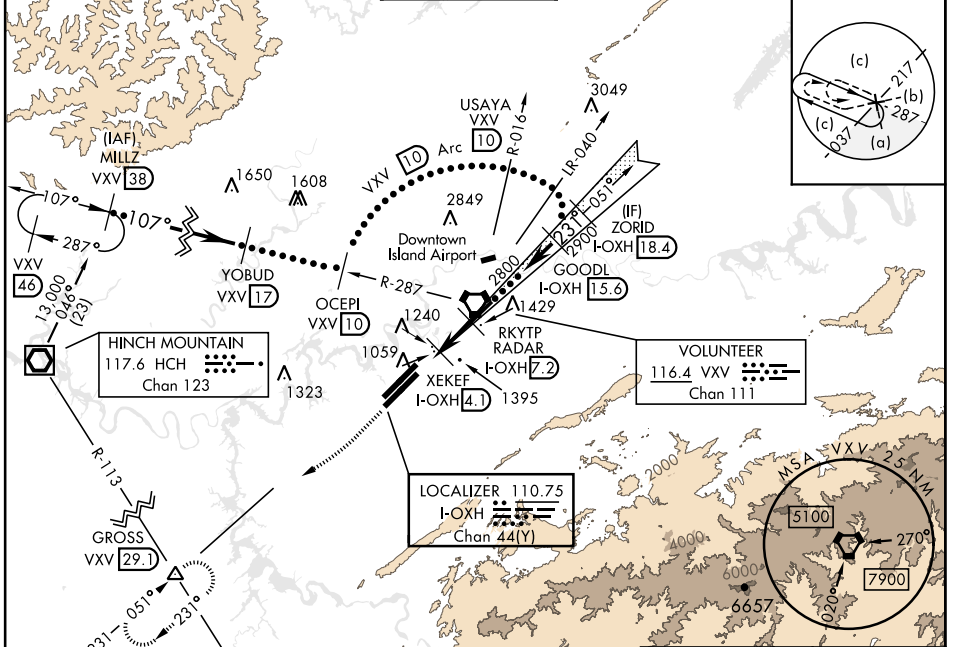


# HI-ILS or LOC RWY 23L

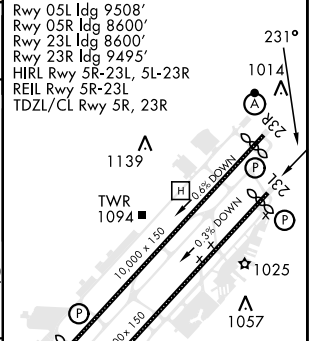
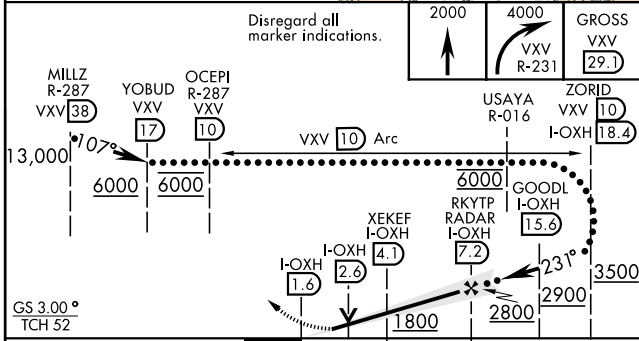
LOC/DME I- <b>OXH</b> <b>110.75</b> Chan <b>44(Y)</b>	APCH CRS <b>231°</b>	Rwy ldg <b>8600</b> TDZE <b>965</b> Arpt Elev <b>986</b>	[USAF]	MC GHEE TYSON (KTYS)
---	----------------------	--	--------	----------------------

DME or RADAR required. MISSED APPROACH: Climb to 2000, then climbing right turn to 4000 on heading 240° VXV R-231 direct GROSS Int/29.1 DME and hold.

ATIS <b>128.35</b>	KNOXVILLE APP CON <b>123.9 360.8</b>	KNOXVILLE TOWER <b>121.2 257.8</b>	GND CON <b>121.9 348.6</b>	CLNC DEL <b>121.65</b>	ASR
-----------------------	---	---------------------------------------	-------------------------------	---------------------------	-----



EMERG SAFE ALT 100 NM 8900 ELEV 986 TDZE 965



CATEGORY	C	D	E
S-ILS 23L	1165-40	200 (200-¾)	
S-LOC 23L	1320-55	355 (400-1¼)	
<b>C</b> CIRCLING	1660-2 679 (700-2)	1900-3 919 (1000-3)	

# HI-ILS or LOC RWY 23L

SE-1, 26 DEC 2024 to 23 JAN 2025

SE-1, 26 DEC 2024 to 23 JAN 2025