

LAS VEGAS, NEVADA

# HI-ILS or LOC Z RWY 21L

LOC I-DIQ <b>109.1</b>	APCH CRS <b>209°</b>	Rwy ldg 21L <b>10,051</b>	21R <b>10,120</b>
		TDZE <b>1865</b>	<b>1869</b>
		Arprt Elev <b>1869</b>	

- (USAF)

NELLIS AFB (KLSV)

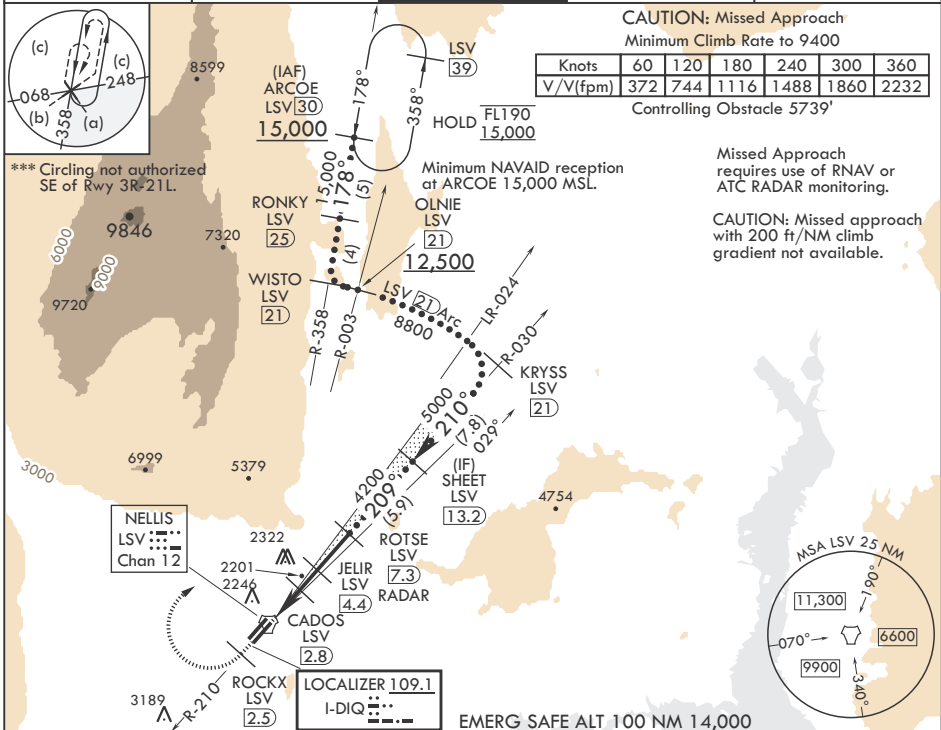
DME or RADAR required.

▼ \* When ALS inop, increase RVR to 40, vis to 3/4 mile.  
 \*\* When ALS inop, increase vis to 1 3/8 miles.



MISSED APPROACH: Climb to 15,000, intercept LSV TACAN R-210 to 2.5 DME (ROCKX), then climbing right turn heading 043° to intercept LSV R-358 to ARCOE and hold, climb in hold to 15,000. Missed approach not for civil use.

ATIS <b>270.1</b>	APP CON <b>124.95 273.55</b>	TOWER <b>132.55 327.0</b>	GND CON <b>121.8 275.8</b>	CLNC DEL <b>120.9 289.4</b>
----------------------	---------------------------------	------------------------------	-------------------------------	--------------------------------



CAUTION: Missed Approach  
Minimum Climb Rate to 9400

Knots	60	120	180	240	300	360
V/V(ftpm)	372	744	1116	1488	1860	2232

Controlling Obstacle 5739'

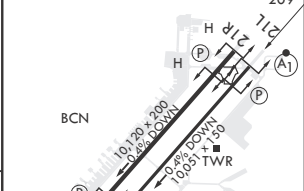
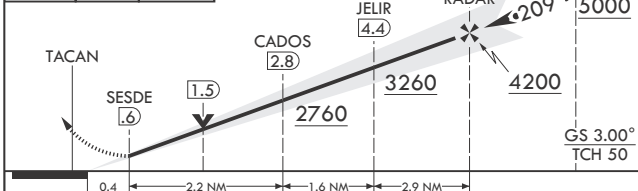
Missed Approach requires use of RNAV or ATC RADAR monitoring.

CAUTION: Missed approach with 200 ft/NM climb gradient not available.

SW-4, 26 DEC 2024 to 23 JAN 2025

SW-4, 26 DEC 2024 to 23 JAN 2025

15,000 LSV	ROCKX LSV 2.5	VGSI and ILS glidepath not coincident (VGSI Angle 3.00/TCH 54).	ROTSE LSV 7.3 RADAR	SHEET 13.2	ELEV 1869	TDZE 21L 1865	TDZE 21R 1869
------------	---------------	---	---------------------	------------	-----------	---------------	---------------



CATEGORY	C	D	E
S-ILS 21L*	2065/24	200	(200-1/2)
S-LOC 21L**	2360/50	495	(500-1)
SIDESTEP 21R	2380-1 3/8	511	(600-1 1/4)
☐ CIRCLING***	2560-2 691 (700-2)	2840-3 971 (1000-3)	3140-3 1271 (1300-3)

HIRL all Rwys					
FAF to MAP 6.7 NM					
Knots	120	140	160	180	200
Min:Sec	3:21	2:52	2:31	2:14	2:01

LAS VEGAS, NEVADA  
Amdt 10 10AUG23

36°14'N - 115°02'W

NELLIS AFB (KLSV)

# HI-ILS or LOC Z RWY 21L