

HI-TACAN Y RWY 21L

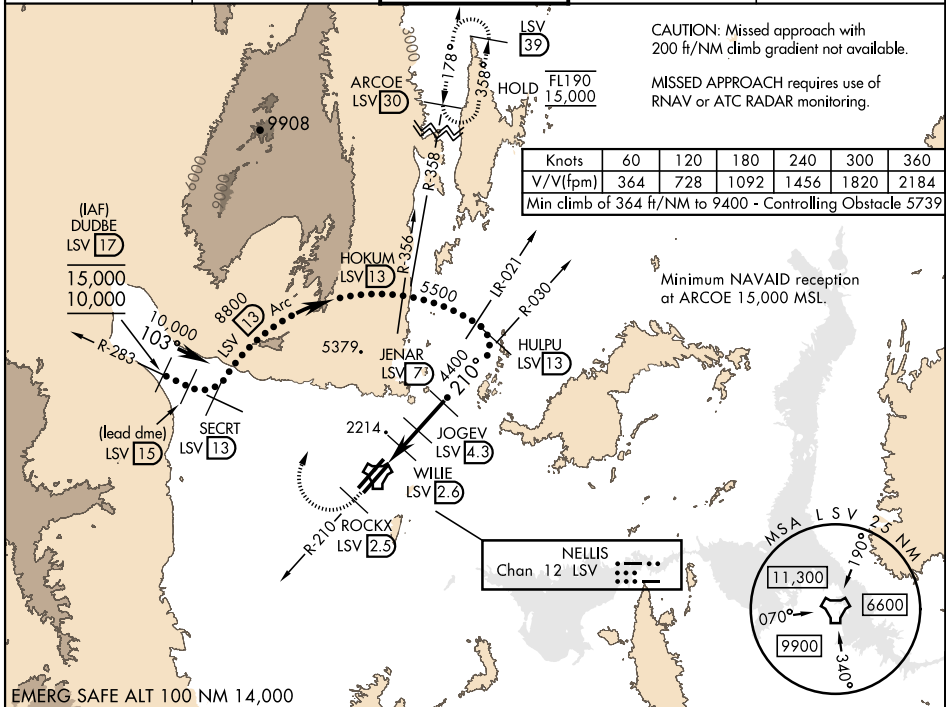
TACAN LSV Chan 12	APCH CRS 210°	Rwy ldg 21L 10,051 TDZE 1865 Arprt Elev 1869	Rwy ldg 21R 10,120 TDZE 1869	AL-227 [USAF]	NELLIS AFB (KLSV)
----------------------	------------------	--	---------------------------------	---------------	-------------------

* When ALS inop, increase CAT CDE vis to 1½ miles.
 ** Circling not authorized SE of Rwy 3R-21L.

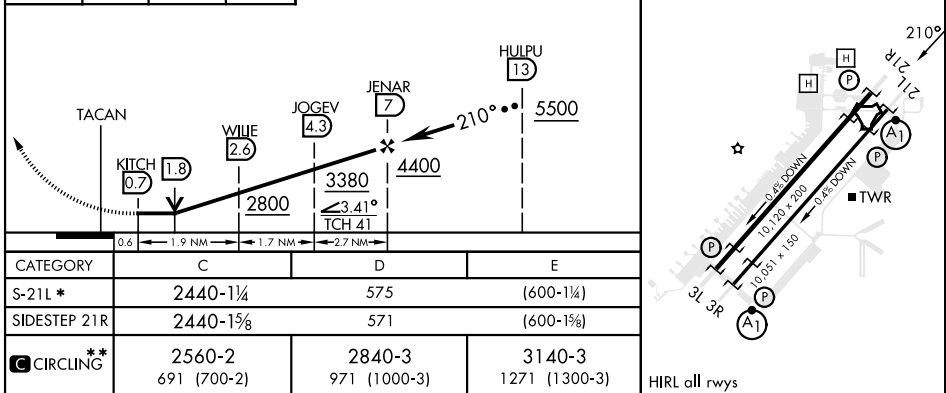
ALSF-1

MISSED APPROACH: Climb to 15,000, intercept LSV TACAN R-210 to 2.5 DME (ROCKX), then climbing right turn heading 043° to intercept LSV R-358 to ARCOE and hold, climb in hold to 15,000. Missed approach not for civil use.

ATIS 270.1	APP CON 124.95 273.55	TOWER 132.55 327.0	GND CON 121.8 275.8	CLNC DEL 120.9 289.4
---------------	--------------------------	-----------------------	------------------------	-------------------------



15,000 LSV R-210	ROCKX LSV 2.5	ARCOE R-358 30	VGSI and descent angles not coincident (VGSI Angle 3.00/TCH 54).	ELEV 1869	TDZE 21L 1865 TDZE 21R 1869
------------------	---------------	----------------	--	-----------	--------------------------------



HI-TACAN Y RWY 21L

SW-4, 26 DEC 2024 to 23 JAN 2025

SW-4, 26 DEC 2024 to 23 JAN 2025