

# MORMON MESA EIGHT DEPARTURE (MMM8 • MMM)

NELLIS AFB (KLSV)  
LAS VEGAS, NEVADA

• 9485  
 ATIS 270.1  
 CLNC DEL  
 120.9 289.4  
 GND CON  
 121.8 275.8  
 TOWER  
 132.55 327.0  
 DEP CON  
 135.1 350.225  
 LOS ANGELES CENTER  
 124.2 134.65 307.9 343.6

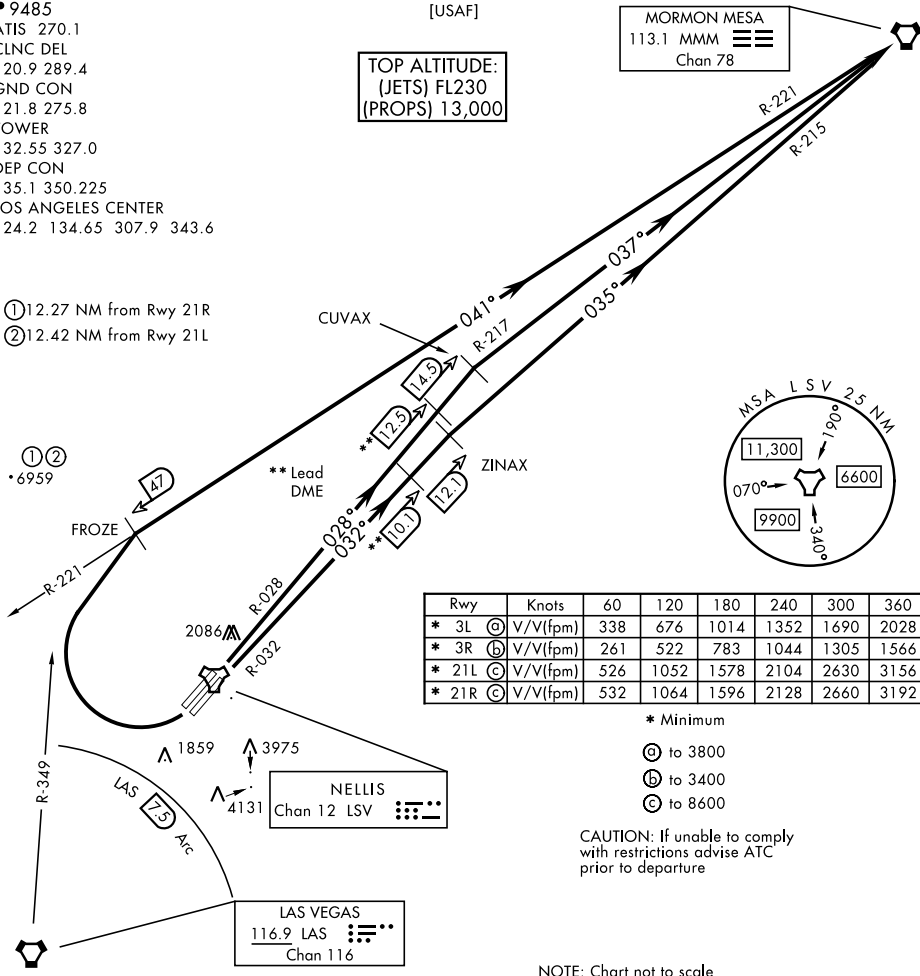
[USAF]

TOP ALTITUDE:  
 (JETS) FL230  
 (PROPS) 13,000

MORMON MESA  
 113.1 MMM  
 Chan 78

- ① 12.27 NM from Rwy 21R
- ② 12.42 NM from Rwy 21L

① ②  
 • 6959



SW-4, 26 DEC 2024 to 23 JAN 2025

SW-4, 26 DEC 2024 to 23 JAN 2025

NOTE: Chart not to scale

## DEPARTURE ROUTE DESCRIPTION

**TAKEOFF RWY 3L:** Fly runway heading to intercept LSV TACAN R-028 then direct CUVAX, intercept the MMM VORTAC R-217 then direct MMM, thence...

**TAKEOFF RWY 3R:** Fly runway heading to intercept LSV TACAN R-032 then direct ZINAX, intercept the MMM VORTAC R-215 then direct MMM, thence...

**TAKEOFF RWY 21L/R:** Turn right to intercept MMM VORTAC R-221 prior to MMM 47 DME (FROZE), remain north of the LAS VORTAC 7.5 DME, remain East of LAS R-349, intercept MMM R-221 then direct MMM, thence...

...turbojets maintain FL230 (or requested altitude if lower), props maintain 13,000 (or requested altitude if lower), then via assigned route. Expect filed altitude 10 minutes after departure.

NOISE ABATEMENT PROCEDURES: Fly IAW Nellis Noise Abatement instructions published in AP/1.

# MORMON MESA EIGHT DEPARTURE (MMM8 • MMM)

Amdt 7 25JAN24

LAS VEGAS, NEVADA  
NELLIS AFB (KLSV)