

SIN CITY VISUAL RWY 03L/R

AL-227 (USAF)

NELLIS AFB (KLSV)

LAS VEGAS, NEVADA

RADAR required

GASS PEAK

• 6943

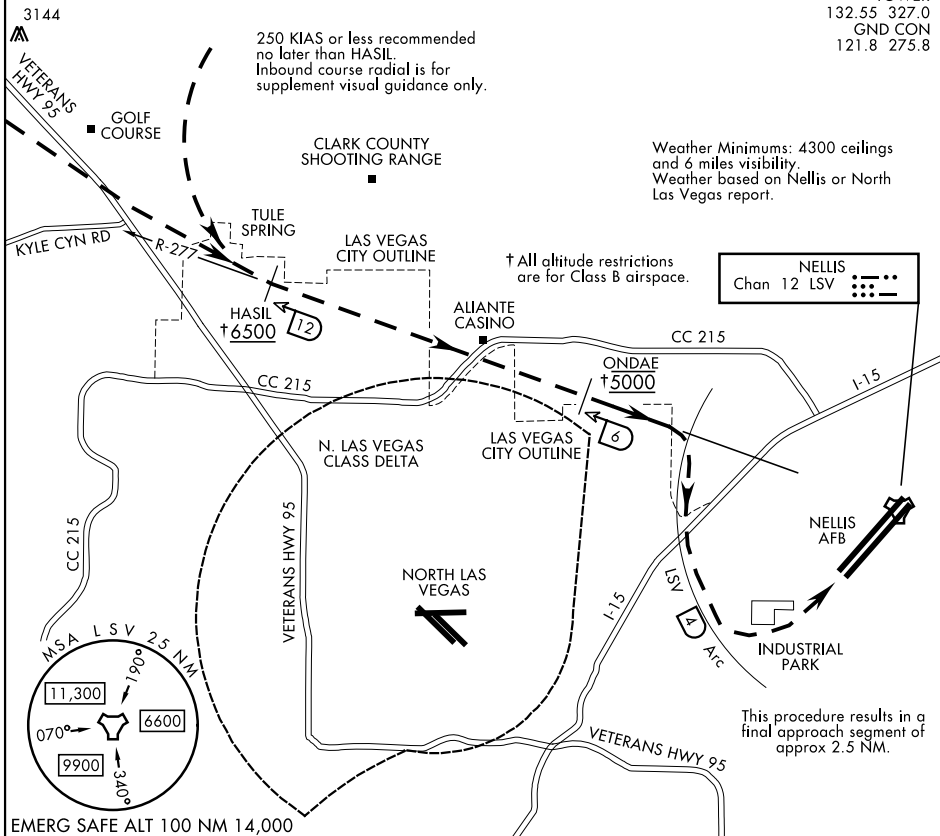
ATIS 270.1
 APP CON 124.95 273.55
 TOWER 132.55 327.0
 GND CON 121.8 275.8

250 KIAS or less recommended no later than HASIL. Inbound course radial is for supplement visual guidance only.

Weather Minimums: 4300 ceilings and 6 miles visibility. Weather based on Nellis or North Las Vegas report.

† All altitude restrictions are for Class B airspace.

NELLIS Chan 12 LSV



EMERG SAFE ALT 100 NM 14,000

1 NM	2	3	4	5	6	7	8	9	10	11	12	13	14	15	16
------	---	---	---	---	---	---	---	---	----	----	----	----	----	----	----

SIN CITY VISUAL RWY 03L/R

Expect RADAR vectors to HASIL (LSV TACAN R-277/12 DME) and report Northwest Las Vegas city outline in sight (ATC Clearance - "Cleared Sin City Visual Rwy 03 Approach") Cross HASIL at or above 6500, proceed visually via LSV R-277 and descend to cross ONDAE at 5000.

Based on traffic conditions, ATC may assign a different DME and/or an altitude to maintain until established visually on LSV R-277; pilots shall advise ATC if unable to comply with the revised clearance and any remaining published altitude restrictions. - example: "Cleared Sin City Visual Rwy 03 Approach via 10 DME, maintain (altitude) until established inbound on LSV R-277".

Continue visual descent in right turn to join LSV TACAN 4 DME Arc until extended final Rwy 03. Make base turn to remain within 4 DME to protect against Las Vegas Approach airspace/traffic. Tower will assign either RWY 03 L/R.

SIN CITY VISUAL RWY 03L/R

36°14'N-115°02'W

LAS VEGAS, NEVADA

Amdt 3 10AUG23

NELLIS AFB (KLSV)

SW-4, 26 DEC 2024 to 23 JAN 2025

SW-4, 26 DEC 2024 to 23 JAN 2025