

LAS VEGAS, NEVADA

TACAN X RWY 21L

TACAN LSV Chan 12 APCH CRS 210°

Rwy ldg 21L 21R
TDZE 10,051 10,120
Arprt Elev 1865 1869

AL-227 (USAF)

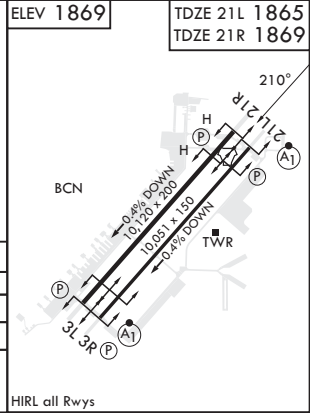
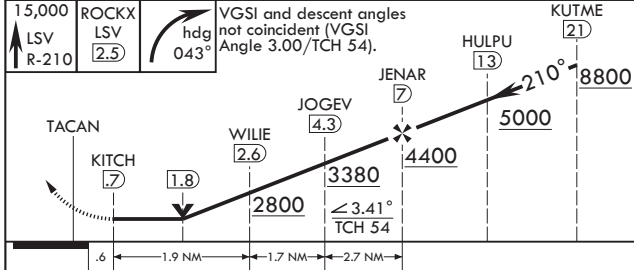
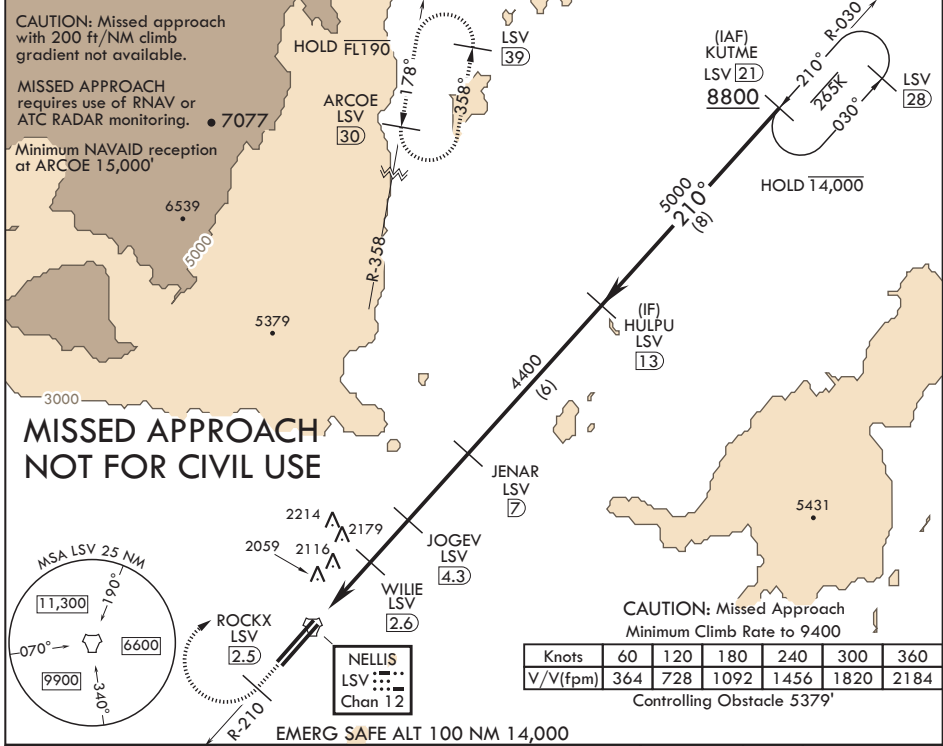
NELLIS AFB (KLSV)

⚠ * When ALS inop, increase CAT AB RVR to 55, vis to 1 mile, CAT CDE vis to 1 5/8 miles.
** Circling not authorized SE of Rwy 3R-21L.



MISSED APPROACH: Climb to 15,000, intercept LSV TACAN R-210 to 2.5 DME (ROCKX), then climbing right turn heading 043° to intercept LSV R-358 to ARCOE and hold, climb in hold to 15,000. Missed approach not for civil use.

ATIS 270.1	APP CON 124.95 273.55	TOWER 132.55 327.0	GND CON 121.8 275.8	CLNC DEL 120.9 289.4
----------------------	---------------------------------	------------------------------	-------------------------------	--------------------------------



CATEGORY	A	B	C	D	E
S-21L*	2440/24 575 (600-½)	2440-1¼ 575 (600-1¼)	2440-1¼ 575 (600-1¼)	2440-1¼ 575 (600-1¼)	2440-1¼ 575 (600-1¼)
SIDESTEP 21R	2440-1 571 (600-1)	2440-1 571 (600-1)	2440-1 571 (600-1)	2440-1 571 (600-1)	2440-1 571 (600-1)
Ⓢ CIRCLING**	2440-1 571 (600-1)	2460-1 591 (600-1)	2560-2 691 (700-2)	2840-3 971 (1000-3)	3140-3 1271 (1300-3)

LAS VEGAS, NEVADA
Amdt 10 10AUG23

36°14'N - 115°02'W

NELLIS AFB (KLSV)

TACAN X RWY 21L

SW-4, 26 DEC 2024 to 23 JAN 2025

SW-4, 26 DEC 2024 to 23 JAN 2025