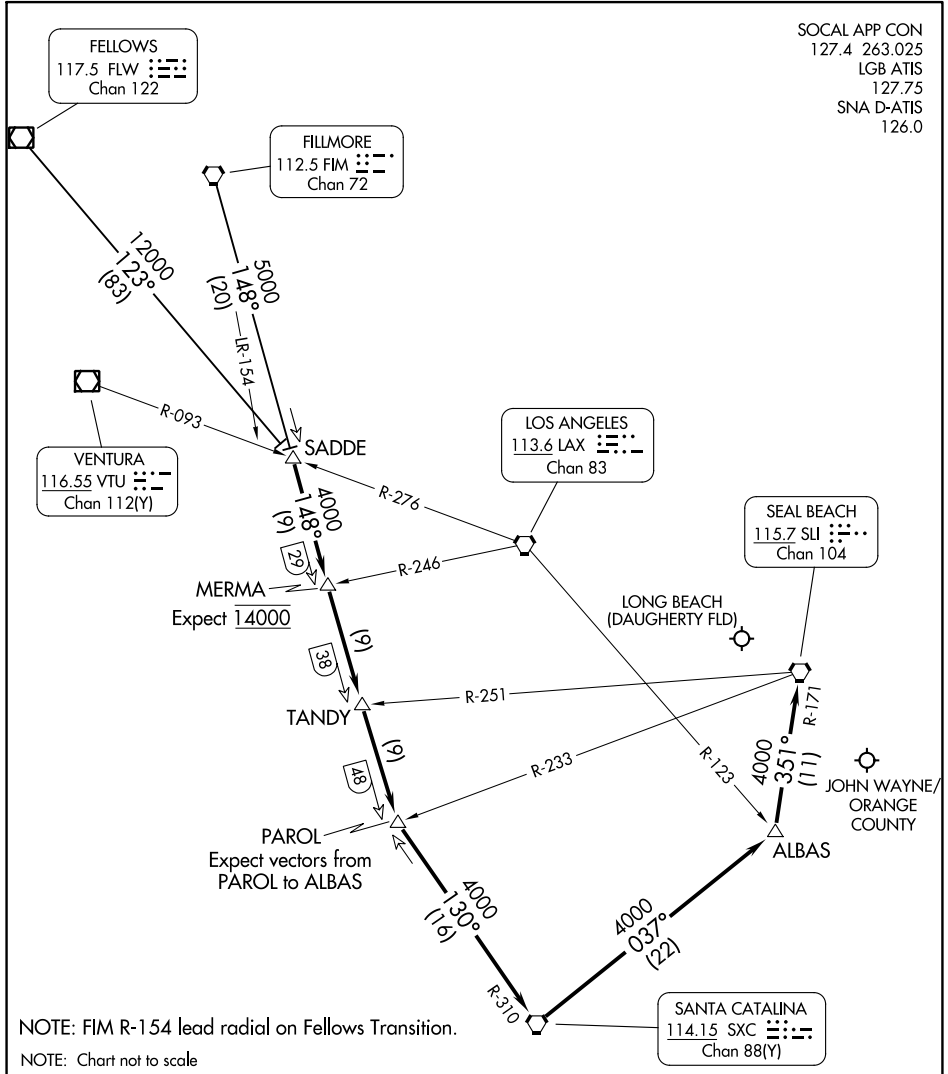


SOCAL APP CON
127.4 263.025
LGB ATIS
127.75
SNA D-ATIS
126.0



SW-3, 26 DEC 2024 to 23 JAN 2025

SW-3, 26 DEC 2024 to 23 JAN 2025

ARRIVAL ROUTE DESCRIPTION

FELLOWS TRANSITION (FLW.TANDY5): From over FLW VOR/DME on FLW R-123 to SADDE. Thence. . .

FILLMORE TRANSITION (FIM.TANDY5): From over FIM VORTAC on FIM R-148 to SADDE. Thence. . .

. . . From over SADDE on FIM R-148 to PAROL. From over PAROL on SXC R-310 to SXC VORTAC. Then from over SXC VORTAC on SXC R-037 to ALBAS. Then from ALBAS on SLI R-171 to SLI VORTAC.