

BIGBR THREE ARRIVAL (RNAV) Transition Routes

SW-3, 26 DEC 2024 to 23 JAN 2025

NOTE: RADAR required.

NOTE: RNAV 1.

NOTE: DME/DME/IRU or GPS required.

NOTE: Turboprop aircraft only.

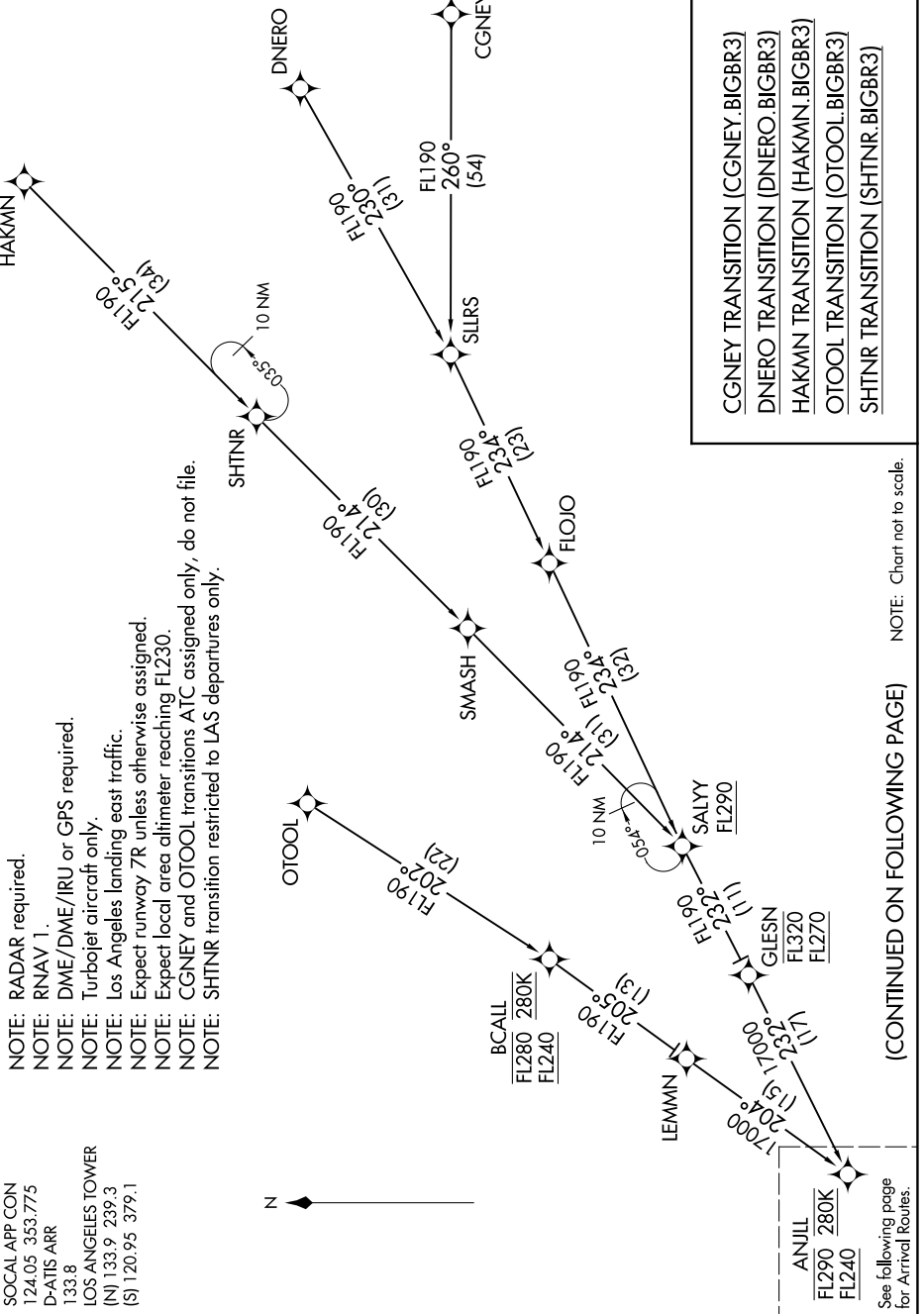
NOTE: Los Angeles landing east traffic.

NOTE: Expect local area altimeter reaching FL230.

NOTE: CGNEY and OTOOL transitions ATC assigned only, do not file.

NOTE: SHTNR transition restricted to LAS departures only.

SOCAL APP CON
124.05 353.775
D-ATIS ARR
133.8
LOS ANGELES TOWER
(N) 133.9 239.3
(S) 120.95 379.1



- CGNEY TRANSITION [CGNEY.BIGBR3]
- DNERO TRANSITION [DNERO.BIGBR3]
- HAKMN TRANSITION [HAKMN.BIGBR3]
- OTOOL TRANSITION [OTOOL.BIGBR3]
- SHTNR TRANSITION [SHTNR.BIGBR3]

(CONTINUED ON FOLLOWING PAGE) NOTE: Chart not to scale.

See following page for Arrival Routes.

BIGBR THREE ARRIVAL (RNAV) Transition Routes

SW-3, 26 DEC 2024 to 23 JAN 2025