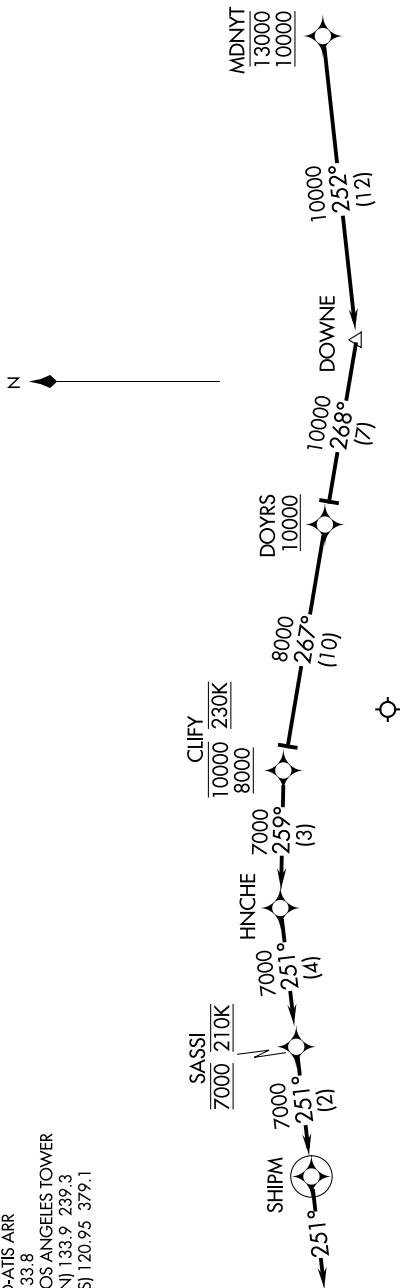


MDNYT TWO ARRIVAL (RNAV) Arrival Routes

SW-3, 26 DEC 2024 to 23 JAN 2025

SOCAL APP CON
124.05 353.775
D-ATIS ARR
133.8
LOS ANGELES TOWER
(N) 133.9 239.3
(S) 120.95 379.1



- NOTE: RADAR required.
- NOTE: RNAV 1.
- NOTE: DME/DME/IRU or GPS required.
- NOTE: This arrival for use only when noise abatement procedures are in effect.
- NOTE: Expect runway 6R unless otherwise assigned.
- NOTE: Expect local area altimeter reaching FL230.

NOTE: Chart not to scale.

ARRIVAL ROUTE DESCRIPTION

LANDING RUNWAYS 6L/R: From MDNYT on track 252° to DOWNE, then on track 268° to cross DOYRS at or above 10000, then on track 267° to cross CLIFY between 8000 and 10000 and at 230K, then on track 259° to HNCHE, then on track 251° to cross SASSI at 7000 and at 210K, then on track 251° to SHIPM, then on track 251°. Expect RADAR vectors to ILS or RNAV (RNP) RWY 6R final approach course.

LOST COMMUNICATIONS: In the event of lost communication proceed on the RNAV (RNP) RWY 6R or ILS or LOC RWY 6R approach.

SW-3, 26 DEC 2024 to 23 JAN 2025