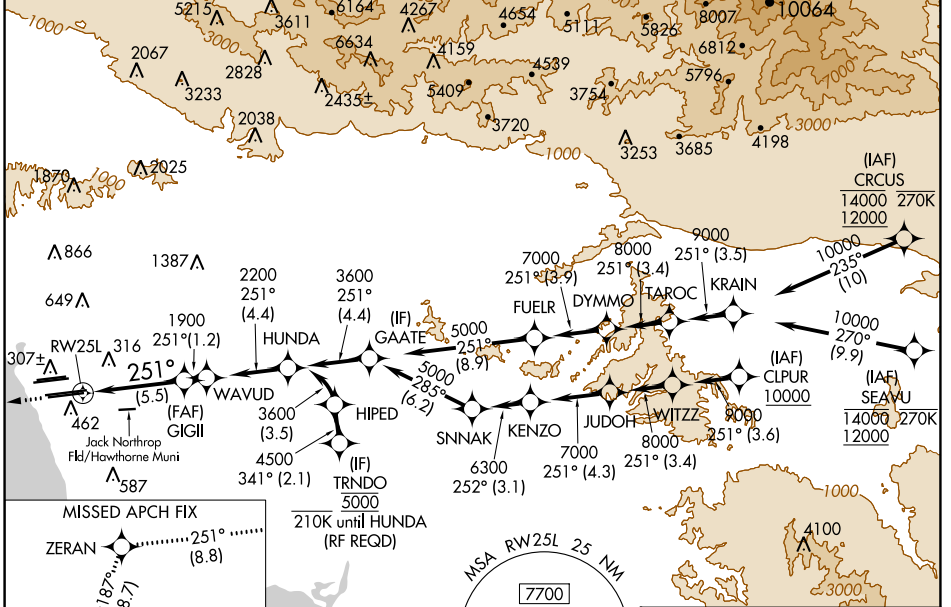


APP CRS	Rwy Idg	<b>11095</b>
<b>251°</b>	TDZE	<b>104</b>
	Apf Elev	<b>128</b>

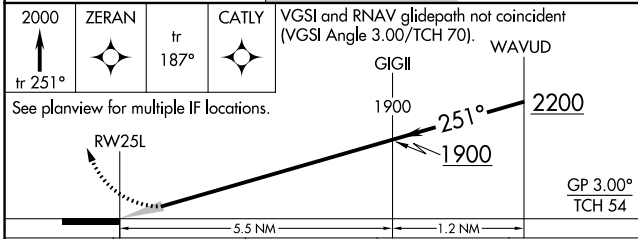
# RNAV (RNP) Z RWY 25L

LOS ANGELES INTL (LAX)

RNP AR APCH.		ALSF-2		MISSED APPROACH: Climb to 2000 on track 251° to ZERAN and on track 187° to CATLY and hold.	
<p>GPS required. For uncompensated Baro-VNAV systems, procedure NA below 5°C or above 54°C. Simultaneous approach authorized. Simultaneous approach authorized with HHR.</p>		<p>LOS ANGELES TOWER</p> <p><b>N 133.9 239.3</b></p> <p><b>S 120.95 379.1</b></p>		<p>GND CON</p> <p><b>N 121.65 327.0</b></p> <p><b>S 121.75 327.0</b></p> <p><b>W 121.4 327.0</b></p>	
<p>D-ATIS</p> <p>ARR <b>133.8</b></p> <p>DEP <b>135.65</b></p>		<p>SOCL APP CON</p> <p><b>124.3 363.2</b></p> <p><b>124.9 269.0</b></p> <p>(225°-044°) (090°-224°)</p>		<p>CINC DEL</p> <p><b>120.35</b></p> <p><b>327.0</b></p>	



ELEV 128	<b>D</b> TDZE 104
----------	-------------------



CATEGORY	A	B	C	D
RNP 0.15 DA		445/30	341 (400- $\frac{2}{3}$ )	
RNP 0.30 DA		543/50	439 (500-1)	

**AUTHORIZATION REQUIRED**

TDZ/CL Rwws 6R, 7L, 24R, and 25L  
HIRL all Rwws