


APP CRS	Rwy Idg	11259
071°	TDZE	128
	Apt Elev	128

RNAV (RNP) Z RWY 7L

LOS ANGELES INTL (LAX)

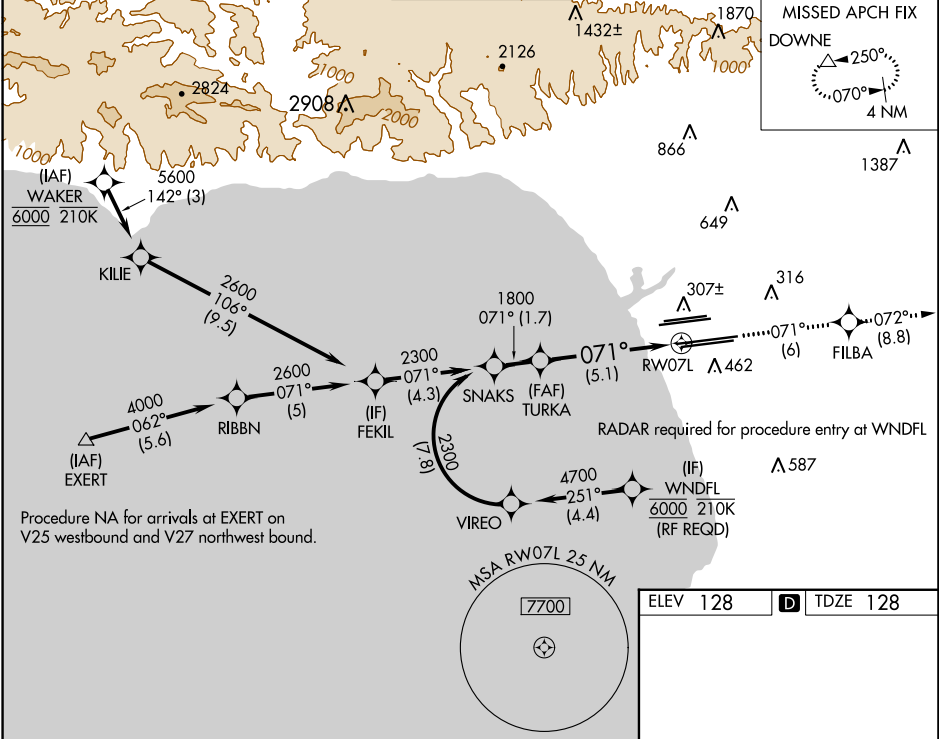
▽ For uncompensated Baro-VNAV systems, procedure NA below 5°C (41°F) or above 54°C (130°F). GPS required. Simultaneous approach authorized. For inop ALS, increase RNP 0.11 all Cats visibility to RVR 5000 and RNP 0.30 all Cats visibility to RVR 6000.

MALSR



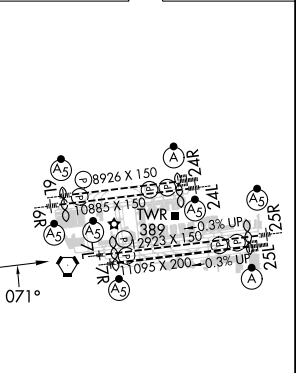
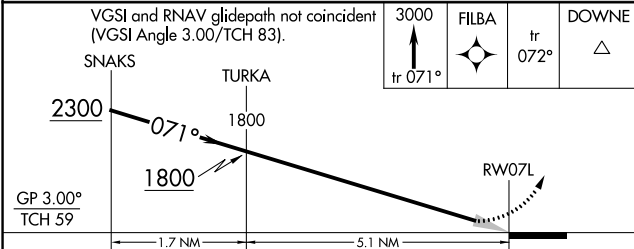
MISSED APPROACH: Climb to 3000 on track 071° to FILBA and on track 072° to DOWNE and hold.

D-ATIS	124.3 363.2 <small>(APCH FM WEST)</small>	124.9 269.0 <small>(090°-224°)</small>	LOS ANGELES TOWER	GND CON	CLNC DEL	CPDLC
ARR 133.8	124.5 235.975 <small>(225°-044°)</small>	128.5 360.7 <small>(045°-089°)</small>	N 133.9 239.3 S 120.95 379.1	N 121.65 327.0 S 121.75 327.0 W 121.4 327.0	120.35 327.0	
DEP 135.65						



Procedure NA for arrivals at EXERT on V25 westbound and V27 northwest bound.

ELEV 128	D TDZE 128
----------	-------------------



CATEGORY	A	B	C	D
RNP 0.11 DA		441/24	313 (400-½)	
RNP 0.30 DA		485/40	357 (400-¾)	

AUTHORIZATION REQUIRED

TDZ/CL Rwy's 6R, 7L, 24R, and 25L
HIRL all Rwy's

SW-3, 26 DEC 2024 to 23 JAN 2025

SW-3, 26 DEC 2024 to 23 JAN 2025