

APP CRS 071°	Rwy Idg 11095 TDZE 128 Apt Elev 128
------------------------	--

RNAV (RNP) Z RWY 7R

LOS ANGELES INTL (LAX)

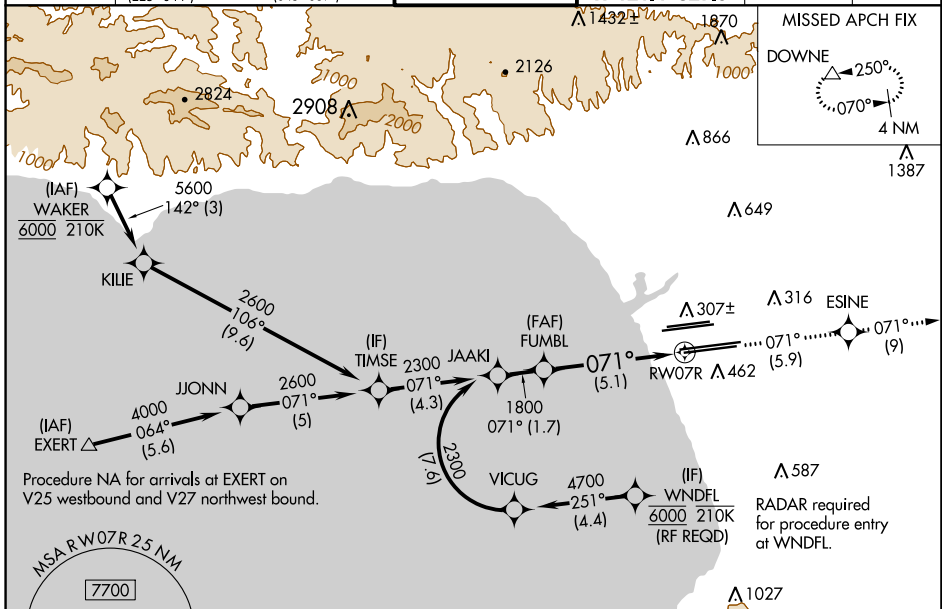
▽ For uncompensated Baro-VNAV systems, procedure NA below 5°C (41°F) or above 54°C (130°F). For inop MALSR, increase RNP 0.11 all Cats visibility to RVR 4500. Simultaneous approach authorized.

MALSR

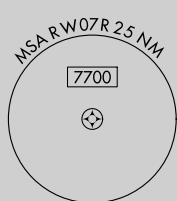


MISSED APPROACH: Climb to 3000 on track 071° to ESINE and on track 071° to DOWNE and hold.

D-ATIS ARR 133.8 DEP 135.65	SOCAL APP CON 124.3 363.2 [APCH FM WEST] 124.5 235.975 [225°-044°]	124.9 269.0 [090°-224°] 128.5 360.7 [045°-089°]	LOS ANGELES TOWER N 133.9 239.3 S 120.95 379.1	GND CON N 121.65 327.0 S 121.75 327.0 W 121.4 327.0	CLNC DEL 120.35 327.0	CPDLC
---	--	--	--	---	---	-------



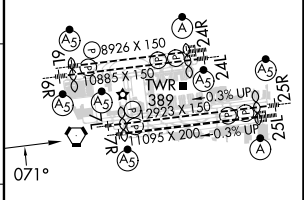
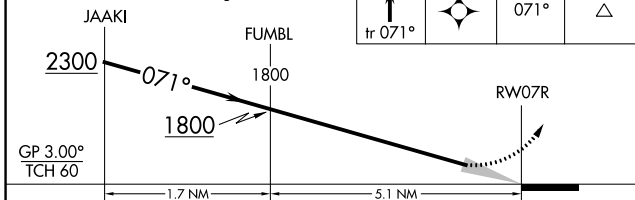
Procedure NA for arrivals at EXERT on V25 westbound and V27 northwest bound.



GPS REQUIRED

ELEV 128	D TDZE 128
----------	-------------------

VGSI and RNAV glidepath not coincident (VGSI Angle 3.00/TCH 57).



CATEGORY	A	B	C	D
RNP 0.11 DA		414/24	286 (300-½)	
RNP 0.30 DA		538/45	410 (500-¾)	

AUTHORIZATION REQUIRED

TDZ/CL Rwy 6R, 7L, 24R, and 25L
HIRL all Rwys