

WAAS CH 61207 W06B	APP CRS 071°	Rwy Idg 9748 TDZE 116 Apt Elev 128
--	------------------------	---

RNAV (GPS) Y RWY 6R

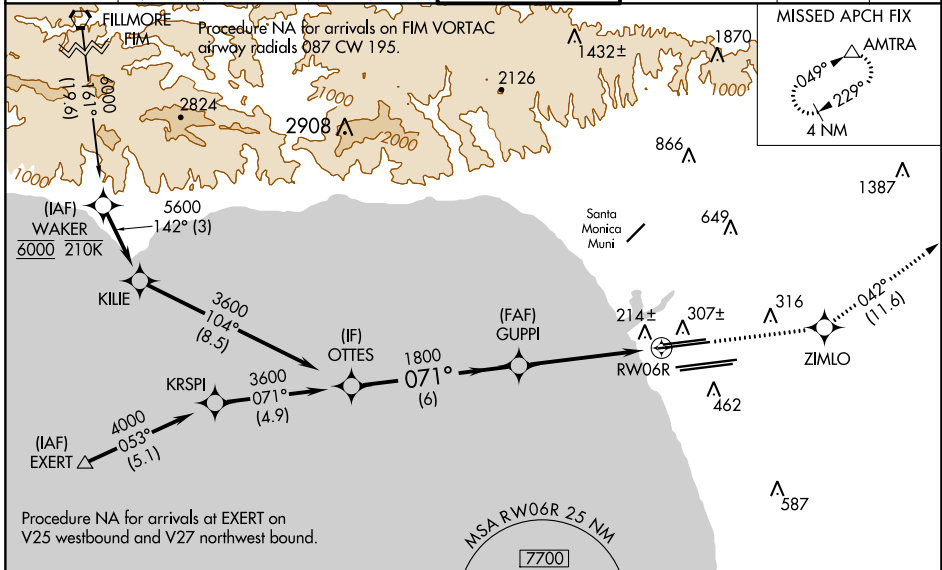
LOS ANGELES INTL (LAX)

▼ For uncompensated Baro-VNAV systems, LNAV/VNAV NA below 5°C (41°F) or above 54°C (130°F). DME/DME RNP-0.3 NA. For inop ALS, increase LNAV/VNAV all Cats visibility to RVR 4500, LNAV Cat C and D visibility to RVR 5500. Simultaneous approach authorized. LNAV procedure NA during simultaneous operations. Use of FD or AP providing RNAV track guidance required during simultaneous operations. # RVR 1800 authorized with use of FD or AP or HUD to DA.

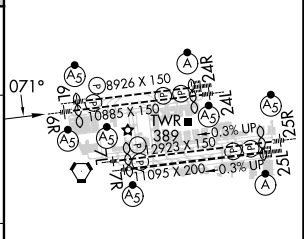
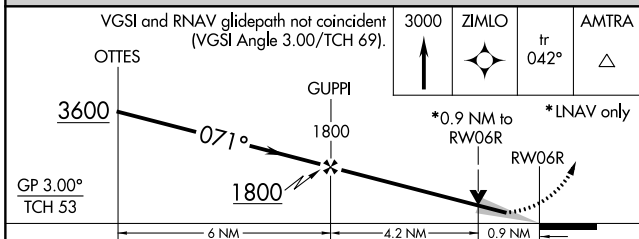


MISSED APPROACH:
Climb to 3000 direct ZIMLO and track 042° to AMTRA and hold.

D-ATIS ARR 133.8 DEP 135.65	SOCAL APP CON 124.3 363.2 (APCH FM WEST) (225°-044°)	124.9 269.0 (090°-224°) 128.5 360.7 (045°-089°)	LOS ANGELES TOWER N 133.9 239.3 S 120.95 379.1	GND CON N 121.65 327.0 S 121.75 327.0 W 121.4 327.0	CLNC DEL 120.35 327.0	CPDLC
---	--	--	--	---	---------------------------------	-------



ELEV 128	D TDZE 116
----------	-------------------



CATEGORY	A	B	C	D
LPV DA#		316/24	200 (200-½)	
LNAV/VNAV DA		398/24	282 (300-½)	
LNAV MDA	480/24	364 (400-½)	480/35	364 (400-¾)

TDZ/CL Rwy's 6R, 7L, 24R, and 25L
HIRL all Rwy's

SW-3, 26 DEC 2024 to 23 JAN 2025

SW-3, 26 DEC 2024 to 23 JAN 2025