

# TRTON TWO DEPARTURE (RNAV)

AL-237 (FAA)

LOS ANGELES INTL (LAX)  
LOS ANGELES, CALIFORNIA

SW-3, 26 DEC 2024 to 23 JAN 2025

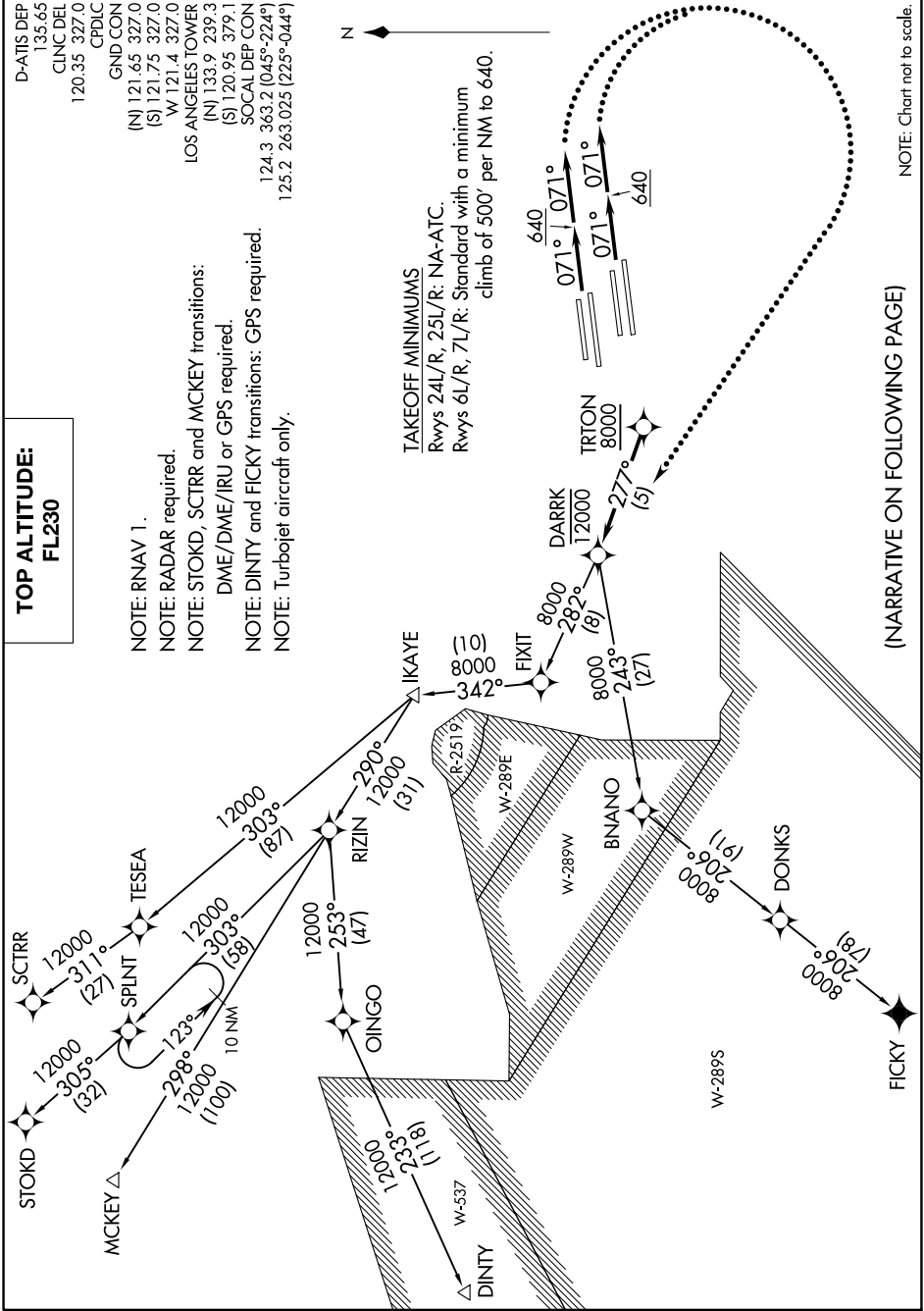
**TOP ALTITUDE:  
FL230**

D-AIS DEP 135.65  
CLINC DEL 120.35 327.0  
CPDLC  
GND/CON (N) 121.65 327.0 (S) 121.75 327.0 W 121.4 327.0  
LOS ANGELES TOWER (N) 133.9 329.3 (S) 120.95 379.1  
SOCAL DEP CON 124.3 363.2 (045°-224°) 125.2 263.025 (225°-044°)

NOTE: RNAV 1.  
NOTE: RADAR required.  
NOTE: STOKD, SCTRR and MCKEY transitions: DME/DME/IRU or GPS required.  
NOTE: DINTY and FICKY transitions: GPS required.  
NOTE: Turbopjet aircraft only.

### TAKEOFF MINIMUMS

Rwys 24L/R, 25L/R: NA-ATC.  
Rwys 6L/R, 7L/R: Standard with a minimum climb of 500' per NM to 640.



(NARRATIVE ON FOLLOWING PAGE)

NOTE: Chart not to scale.

SW-3, 26 DEC 2024 to 23 JAN 2025

# TRTON TWO DEPARTURE (RNAV)

LOS ANGELES, CALIFORNIA  
LOS ANGELES INTL (LAX)