

(HIDEY1.HIDEY) 24193

AL-239 (FAA)

LOUISVILLE MUHAMMAD ALI INTL (SDF)

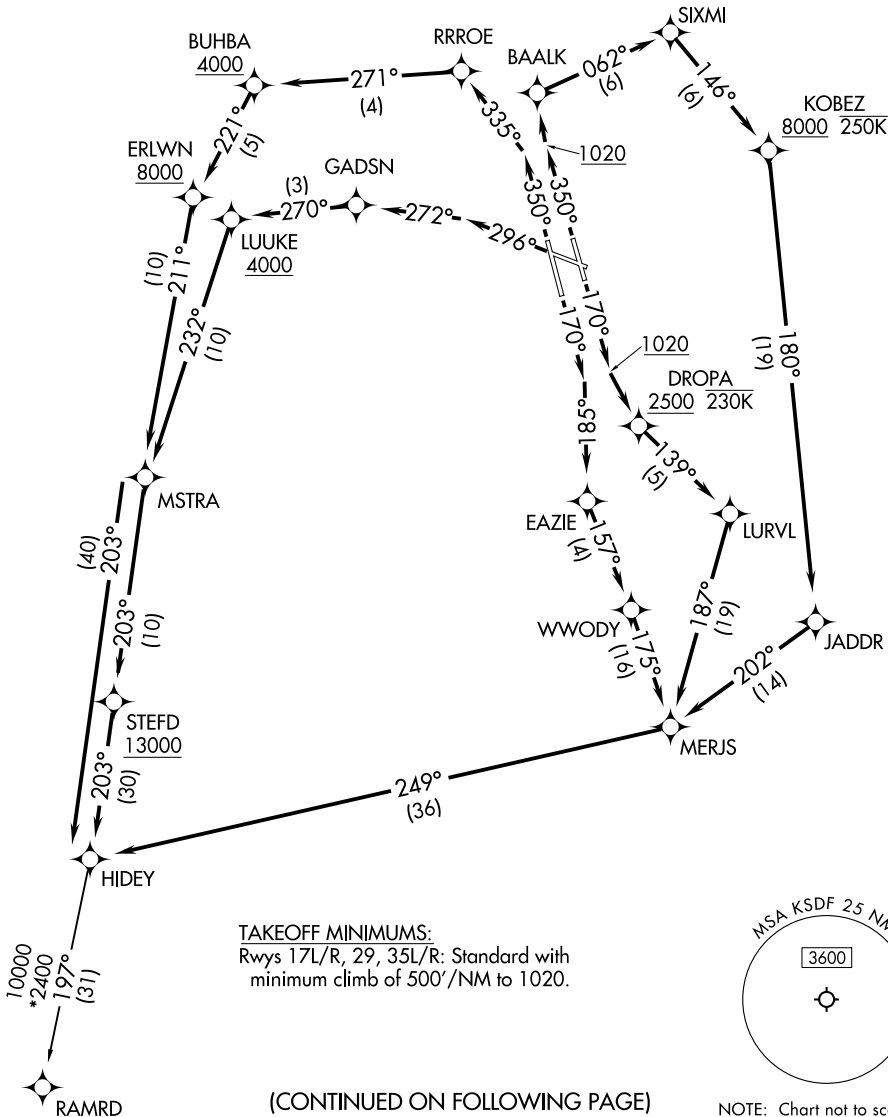
HIDEY ONE DEPARTURE (RNAV)

LOUISVILLE, KENTUCKY

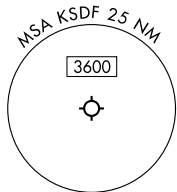
LOUISVILLE DEP CON
 132.075 327.0
 D-ATIS 118.725
 CLNC DEL
 126.1 275.8
 CPDLC
 GND CON
 121.7 348.6
 LOUISVILLE TOWER
 124.2 257.8

RNAV 1 - DME/DME/IRU or GPS.
 RADAR required for non-GPS equipped aircraft.

**TOP ALTITUDE:
 13000**



TAKEOFF MINIMUMS:
 Rwy's 17L/R, 29, 35L/R: Standard with
 minimum climb of 500'/NM to 1020.



(CONTINUED ON FOLLOWING PAGE)

NOTE: Chart not to scale.

HIDEY ONE DEPARTURE (RNAV)

(HIDEY1.HIDEY) 11JUL24

LOUISVILLE, KENTUCKY
 LOUISVILLE MUHAMMAD ALI INTL (SDF)

SE-1, 26 DEC 2024 to 23 JAN 2025

SE-1, 26 DEC 2024 to 23 JAN 2025