

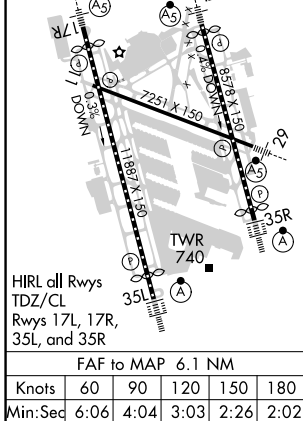
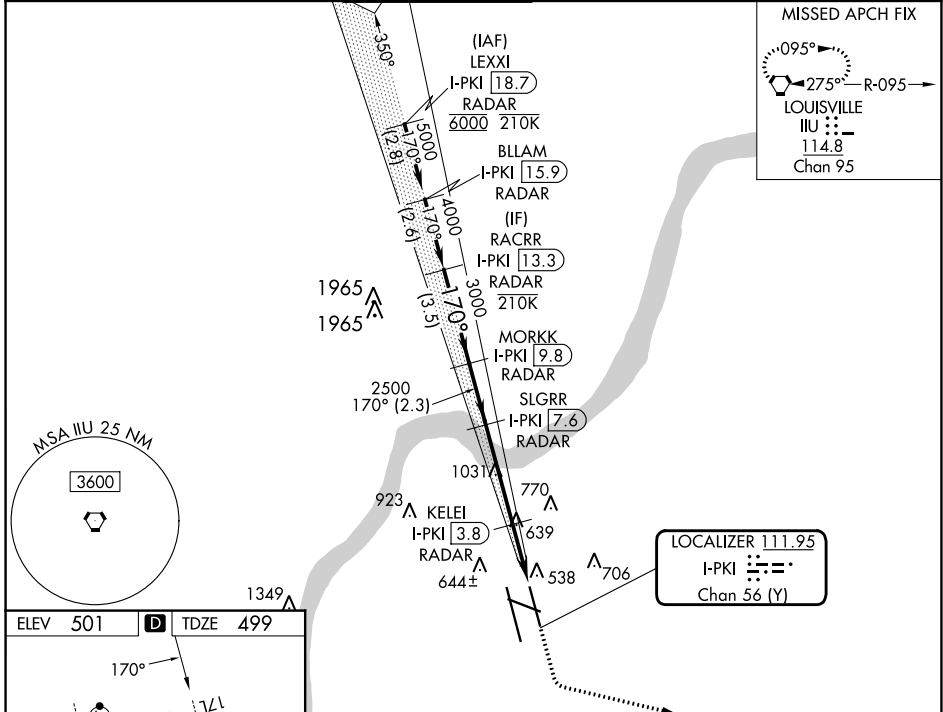
LOC/DME I-PKI 111.95	APP CRS 170°	Rwy Idg 7800
Chan 56 (Y)	TDZE 499	Apt Elev 501

ILS or LOC RWY 17L

LOUISVILLE MUHAMMAD ALI INTL (SDF)

DME or RADAR required. RADAR required for procedure entry.		MALSR 	MISSED APPROACH: Climb to 1000 then climbing left turn to 3000 direct IJU VORTAC, continue climb-in-hold to 3000.	
Simultaneous approach authorized. Circling Rwy 11 NA at night. For inop ALS, increase S-LOC 17L Cat C/D visibility to 1 3/8 SM.				

D-ATIS 118.725	LOUISVILLE APP CON 132.075 327.0	LOUISVILLE TOWER 124.2 257.8	GND CON 121.7 348.6	CLNC DEL 126.1 275.8	CPDLC
--------------------------	--	--	-------------------------------	--------------------------------	-------



RACRR I-PKI 13.3 RADAR	VGS1 and ILS glidepath not coincident (VGS1 Angle 3.00/TCH 63).		1000	3000	IJU
MORKK I-PKI 9.8 RADAR	SLGRR I-PKI 7.6 RADAR	KELEI I-PKI 3.8 RADAR	I-PKI 2.7	I-PKI 1.4	
GS 3.00° TCH 55					
4000		3000		2500	
3.5 NM		2.3 NM		3.7 NM	
1.2 NM	1.2 NM				
CATEGORY	A	B	C	D	
S-ILS 17L	699/18		200 (200-1/2)		
S-LOC 17L	1000/24	501 (500-1/2)	1000/55	501 (500-1)	
<input checked="" type="checkbox"/> CIRCLING	1040-1 539 (600-1)	1140-1 639 (700-1)	1160-1 3/4 659 (700-1 3/4)	1400-3 899 (900-3)	

SE-1, 26 DEC 2024 to 23 JAN 2025

SE-1, 26 DEC 2024 to 23 JAN 2025