

RNAV (RNP) Z RWY 35R

LOUISVILLE MUHAMMAD ALI INTL (SDF)

APP CRS	Rwy Idg	7800
350°	TDZE	479
	Apt Elev	501

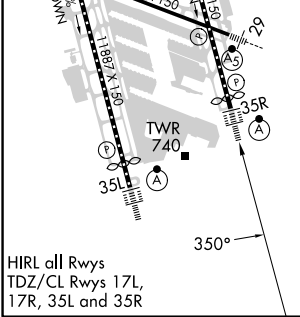
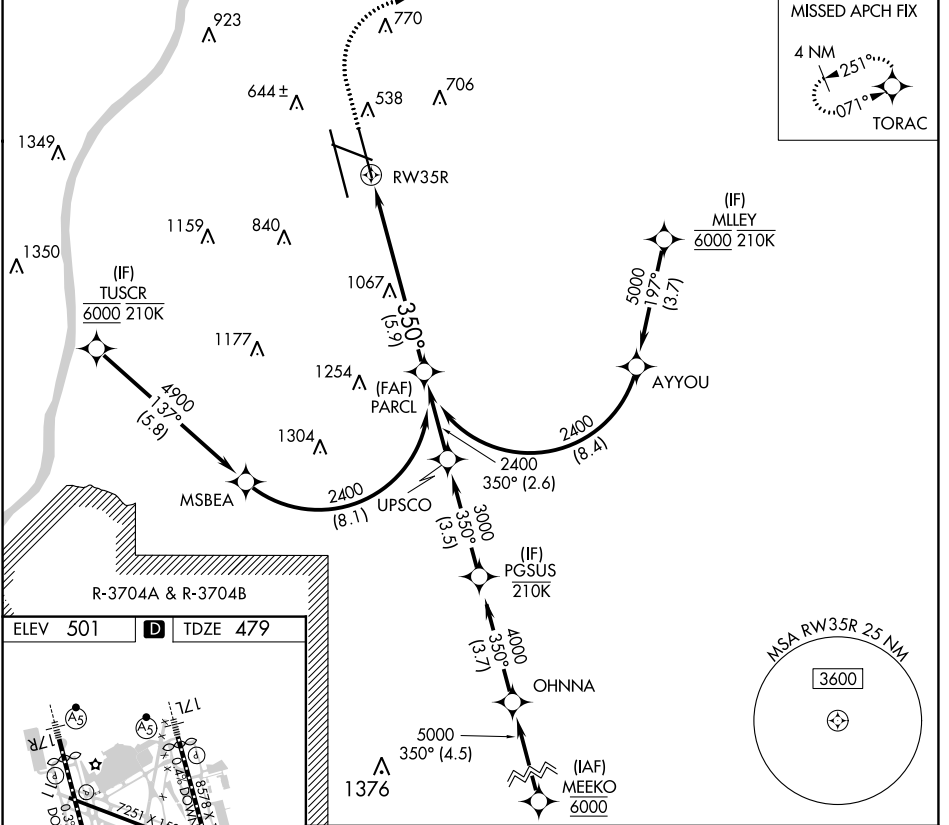
RNP AR APCH - GPS.

▼ For uncompensated Baro-VNAV systems, procedure NA below -13°C or above 54°C. For inop ALS, increase RNP 0.12 all Cats visibility to RVR 4500. Simultaneous approach authorized.

ALSF-2

MISSED APPROACH: Climb to 1600 then climbing right turn to 4000 direct TORAC and hold.

D-ATIS	LOUISVILLE APP CON	LOUISVILLE TOWER	GND CON	CLNC DEL	CPDLC
118.725	132.075 327.0	124.2 257.8	121.7 348.6	126.1 275.8	



1600 4000 TORAC

VGSI and RNAV glidepath not coincident (VGSI Angle 3.00/TCH 71). See planview for multiple IF locations.

PARCL 2400

RW35R 350°

5.9 NM

GP 3.00° TCH 60

CATEGORY	A	B	C	D
RNP 0.12 DA		792/24	313 (300-1/2)	
RNP 0.30 DA		892/40	413 (400-3/4)	

AUTHORIZATION REQUIRED

SE-1, 26 DEC 2024 to 23 JAN 2025

SE-1, 26 DEC 2024 to 23 JAN 2025