

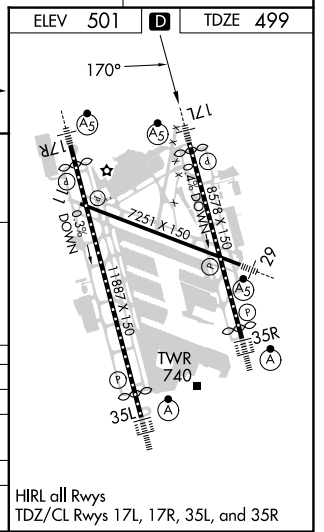
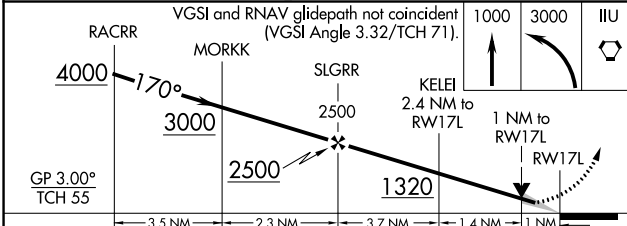
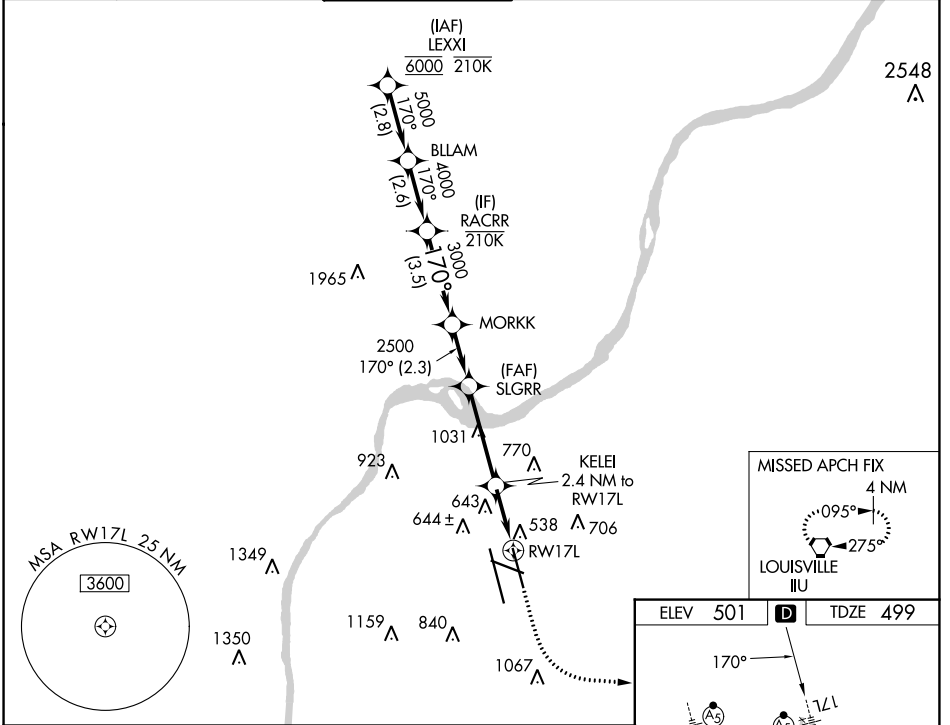
WAAS CH <b>90101</b> <b>W17B</b>	APP CRS <b>170°</b>	Rwy Idg TDZE Apt Elev	<b>7800</b> <b>499</b> <b>501</b>
--	------------------------	-----------------------------	---

# RNAV (GPS) Y RWY 17L

LOUISVILLE MUHAMMAD ALI INTL (SDF)

RNP APCH - GPS.	MALSRS	MISSED APPROACH: Climb to 1000 then climbing left turn to 3000 direct IIL VORTAC and hold, continue climb-in-hold to 3000.
<p>Simultaneous approach authorized. Circling Rwy 11 NA at night. For uncompensated Baro-VNAV systems, LNAV/VNAV NA below -13°C or above 54°C. LNAV procedure NA during simultaneous operations. Use of FD or AP required during simultaneous operations. For inop ALS, increase LNAV/VNAV all Cats visibility to RVR 6000.</p>		

D-ATIS <b>118.725</b>	LOUISVILLE APP CON <b>132.075 327.0</b>	LOUISVILLE TOWER <b>124.2 257.8</b>	GND CON <b>121.7 348.6</b>	CLNC DEL <b>126.1 275.8</b>	CPDLC
--------------------------	--	--	-------------------------------	--------------------------------	-------



CATEGORY	A	B	C	D
LPV DA		699/18	200 (200-½)	
LNAV/VNAV DA		909/40	410 (500-¾)	
LNAV MDA	920/24	421 (500-½)	920/40	421 (500-¾)
CIRCLING	1040-1 539 (600-1)	1140-1 639 (700-1)	1160-1¾ 659 (700-1¾)	1400-3 899 (900-3)

SE-1, 26 DEC 2024 to 23 JAN 2025

SE-1, 26 DEC 2024 to 23 JAN 2025