

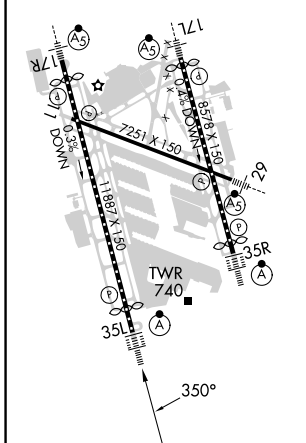
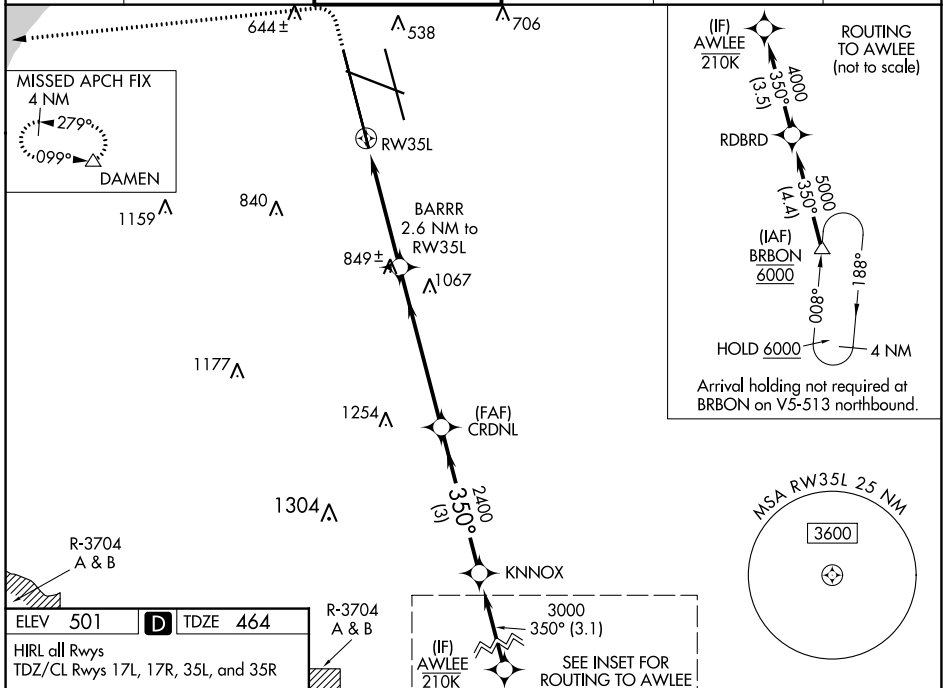
| | | |
|--|------------------------|--|
| WAAS CH 86203 W35A | APP CRS 350° | Rwy Idg 10000 TDZE 464 Apt Elev 501 |
|--|------------------------|--|

RNAV (GPS) Y RWY 35L

LOUISVILLE MUHAMMAD ALI INTL (SDF)

| | | |
|--|------------|---|
| RNP APCH - GPS. ⚠ Simultaneous approach authorized. LNAV procedure NA during simultaneous operations. Use of FD or AP required during simultaneous operations. Circling Rwy 11 NA at night. ⚠ For uncompensated Baro-VNAV systems, LNAV/VNAV NA below -10°C or above 54°C. For inop ALS, increase LNAV Cats C/D visibility to 1½ SM. | ALSF-2 | MISSED APPROACH: Climb to 1000 then climbing left turn to 4000 direct DAMEN and hold. |
|--|------------|---|

| | | | | | |
|--------------------------|--|--|-------------------------------|--------------------------------|-------|
| D-ATIS 118.725 | LOUISVILLE APP CON 132.075 327.0 | LOUISVILLE TOWER 124.2 257.8 | GND CON 121.7 348.6 | CLNC DEL 126.1 275.8 | CPDLC |
|--------------------------|--|--|-------------------------------|--------------------------------|-------|



| | | | | | | |
|---|-----------------------|-----------------------|--|-----------------------|--------|--------------------|
| ELEV 501 | D | TDZE 464 | R-3704 A & B | | | |
| HIRL all Rwys TDZ/CL Rwys 17L, 17R, 35L, and 35R | | | SEE INSET FOR ROUTING TO AWLEE | | | |
| 1000 4000 DAMEN | | | VGSI and RNAV glidepath not coincident (VGSI Angle 3.00/TCH 75). | | | |
| RWY 35L | | | CRDNL | KNNOX | AWLEE | |
| 1.5 NM | | | 1.2 NM | 3.3 NM | 3.1 NM | |
| 1360 | | | 2400 | 2400 | 350° | 4000 |
| | | | | | | GP 3.00° TCH 59 |
| CATEGORY | A | | B | C | D | |
| LPV DA | 664/18 | | 200 (200-½) | | | |
| LNAV/VNAV DA | 901/40 | | 437 (400-¾) | | | |
| LNAV MDA | 1000/24 | 536 (500-½) | 1000/55 | 536 (500-1) | | |
| CIRCLING | 1040-1 539 (600-1) | 1140-1 639 (700-1) | 1160-1¾ 659 (700-1¾) | 1400-3 899 (900-3) | | |

SE-1, 26 DEC 2024 to 23 JAN 2025

SE-1, 26 DEC 2024 to 23 JAN 2025