

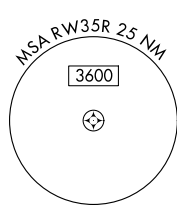
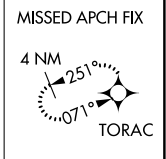
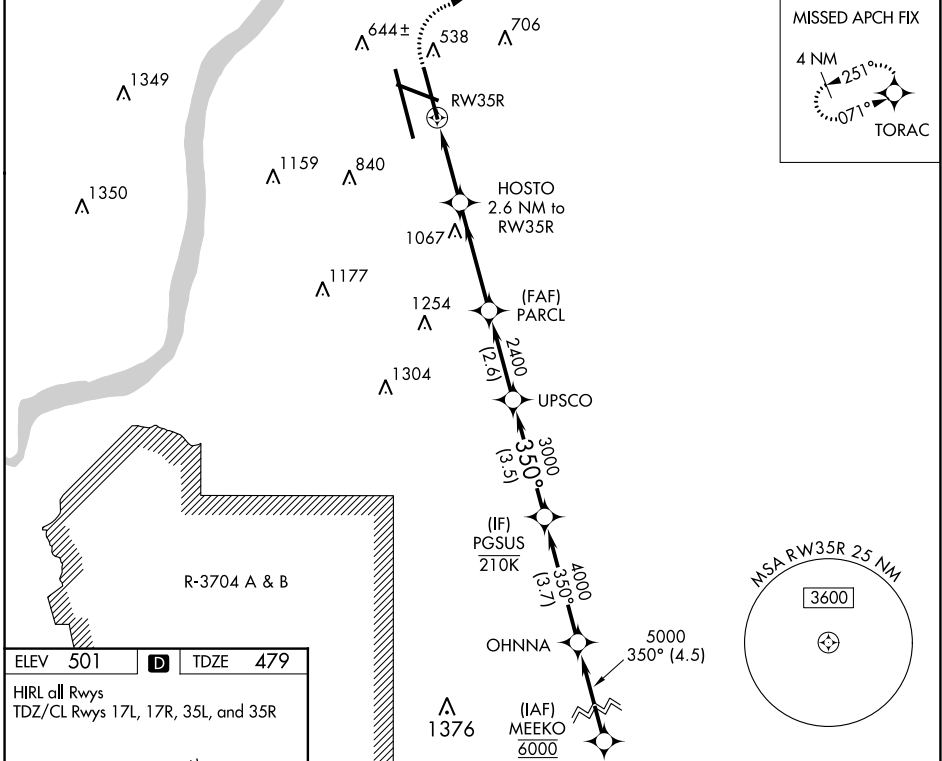
WAAS CH 70709 W35D	APP CRS 350°	Rwy ldg TDZE Apt Elev	7800 479 501
--	------------------------	-----------------------------	---

RNAV (GPS) Y RWY 35R

LOUISVILLE MUHAMMAD ALI INTL (SDF)

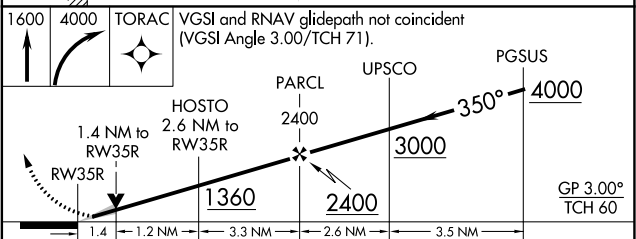
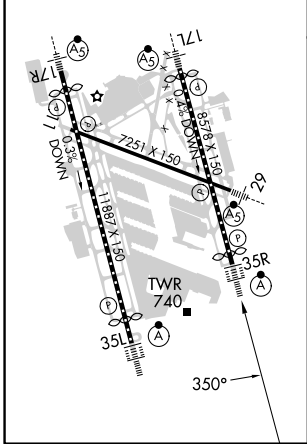
RNP APCH - GPS.		ALSIF-2 MISSED APPROACH: Climb to 1600 then climbing right turn to 4000 direct TORAC and hold.	
<p>Simultaneous approach authorized. LNAV procedure NA during simultaneous operations.</p> <p>Use of FD or AP required during simultaneous operations. Circling Rwy 11 NA at night.</p> <p>For uncompensated Baro-VNAV systems, LNAV/VNAV NA below -13°C or above 54°C.</p>			

D-ATIS 118.725	LOUISVILLE APP CON 132.075 327.0	LOUISVILLE TOWER 124.2 257.8	GND CON 121.7 348.6	CLNC DEL 126.1 275.8	CPDLC
--------------------------	--	--	-------------------------------	--------------------------------	-------



ELEV 501	D	TDZE 479
----------	----------	----------

HIRL all Rwys
TDZ/CL Rwys 17L, 17R, 35L, and 35R



CATEGORY	A	B	C	D
LPV DA		679/18	200 (200-1/2)	
LNAV/VNAV DA		901/40	422 (400-3/4)	
LNAV MDA	1000/24	521 (500-1/2)	1000/55	521 (500-1)
C CIRCLING	1040-1 539 (600-1)	1140-1 639 (700-1)	1160-1 1/4 659 (700-1 1/4)	1400-3 899 (900-3)

SE-1, 26 DEC 2024 to 23 JAN 2025

SE-1, 26 DEC 2024 to 23 JAN 2025