

# SPILR ONE DEPARTURE (RNAV)

LOUISVILLE, KENTUCKY

**TOP ALTITUDE:**  
**13000**

RNAV 1 - DME/DME/IRU or GPS.

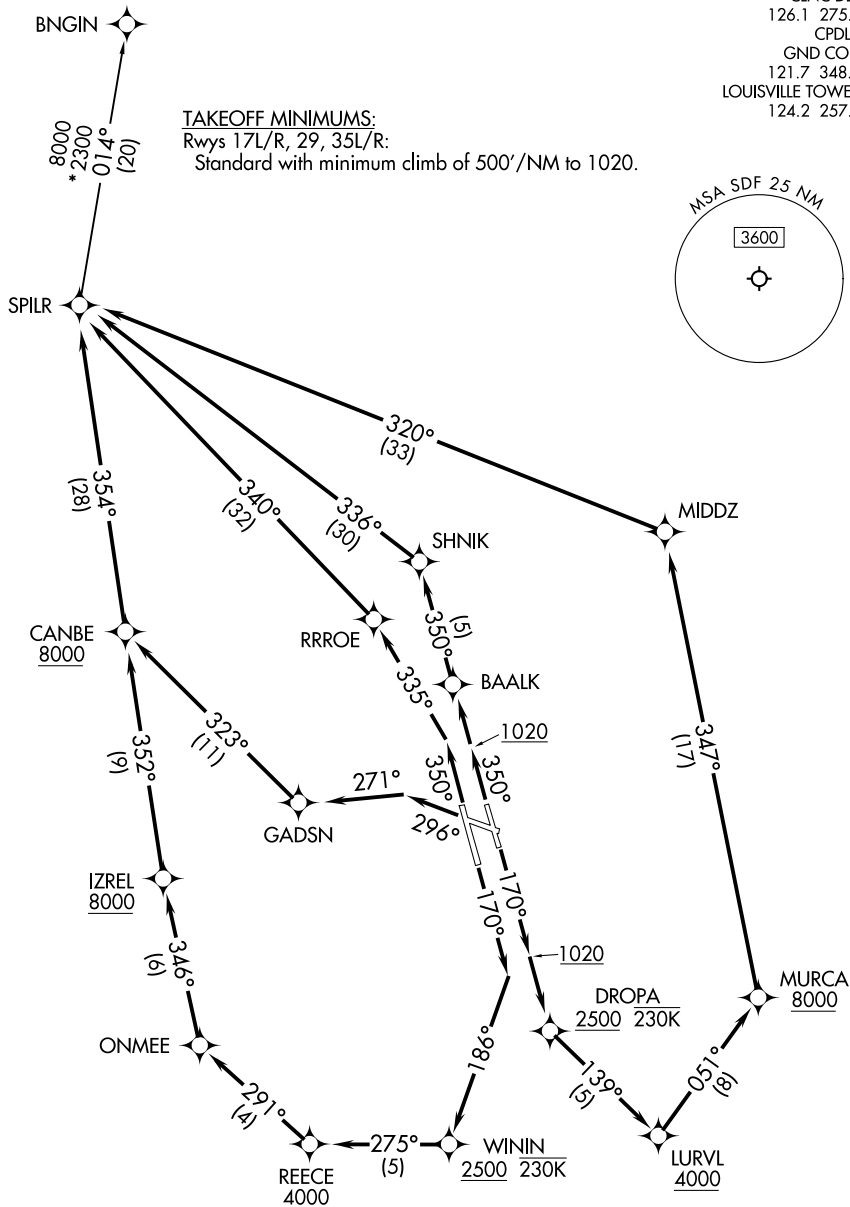
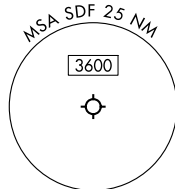
RADAR required for non-GPS equipped aircraft.

LOUISVILLE DEP CON  
 132.075 327.0  
 D-ATIS 118.725  
 CLNC DEL  
 126.1 275.8  
 CPDLC  
 GND CON  
 121.7 348.6  
 LOUISVILLE TOWER  
 124.2 257.8

**TAKEOFF MINIMUMS:**

Rwys 17L/R, 29, 35L/R:

Standard with minimum climb of 500'/NM to 1020.



(CONTINUED ON FOLLOWING PAGE)

NOTE: Chart not to scale.

# SPILR ONE DEPARTURE (RNAV)

LOUISVILLE, KENTUCKY