

MADISON, WISCONSIN

AL-245 (FAA)

24333

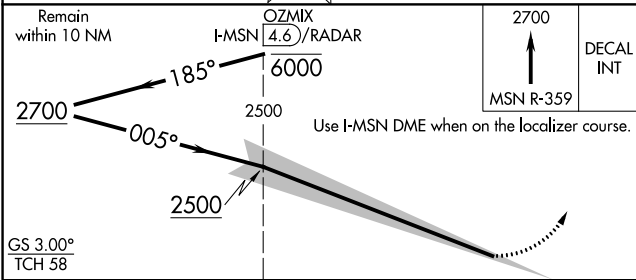
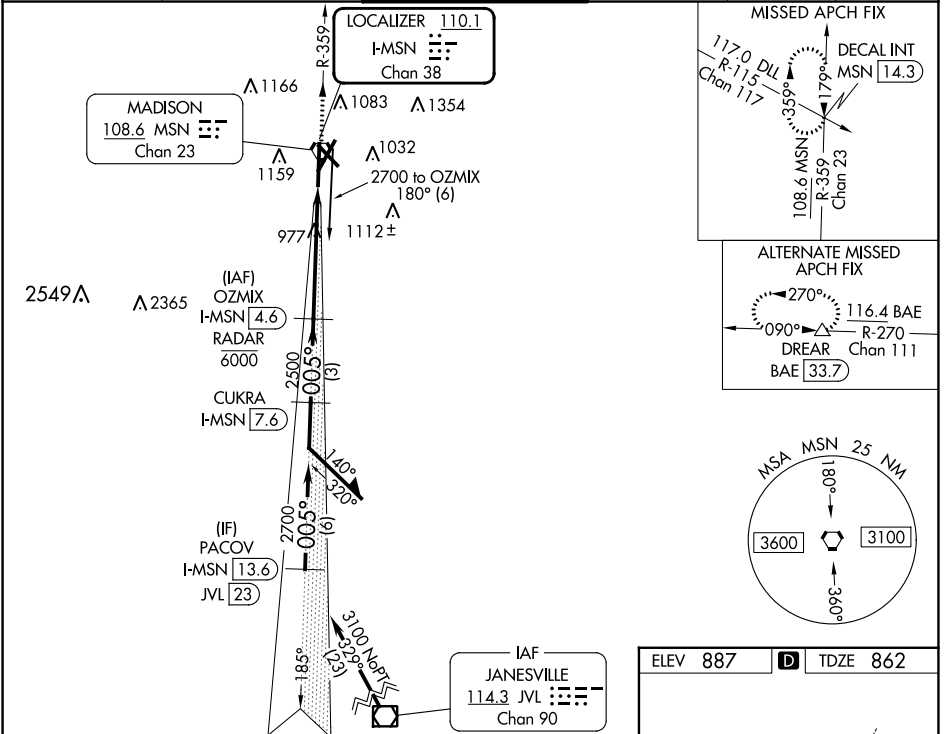
LOC/DME I-MSN <b>110.1</b> Chan <b>38</b>	APP CRS <b>005°</b>	Rwy Idg TDZE <b>862</b> Apt Elev <b>887</b>	<b>8005</b>
---	------------------------	---	-------------

# ILS RWY 36 (CAT II & III)

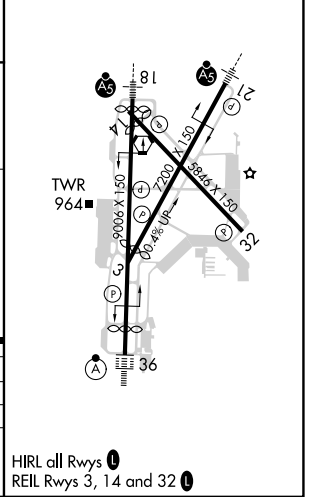
DANE COUNTY RGNL/TRUAX FLD (MSN)

DME or RADAR required.		ALSF-2		MISSED APPROACH: Climb to 2700 on MSN VORTAC R-359 to DECAL INT/MSN 14.3 DME and hold.	
▼ Procedure NA when tower closed. CAT II: RVR 1000 authorized with specific OPSPEC, MSPEC, or LOA approval and use of autoland or HUD to touchdown.		⚠			

ATIS <b>124.65 278.3</b>	MADISON APP CON * <b>135.45 343.7</b>	MADISON TOWER * <b>119.3 (CTAF) 0 257.8</b>	GND CON <b>121.9 348.6</b>	CLNC DEL <b>121.625</b>	UNICOM <b>122.95</b>
-----------------------------	--	--	-------------------------------	----------------------------	-------------------------



ELEV 887	D	TDZE 862
----------	---	----------



CATEGORY	A	B	C	D
S-ILS 36	CAT II RA 109/12 100 DA 962			
S-ILS 36	CAT III RVR 06			
<b>CATEGORY II &amp; III ILS - SPECIAL AIRCREW &amp; AIRCRAFT CERTIFICATION REQUIRED</b>				

MADISON, WISCONSIN  
Amdt 2B 05SEP24

43°08'N-89°20'W

DANE COUNTY RGNL/TRUAX FLD (MSN)  
**ILS RWY 36 (CAT II & III)**

EC-3, 26 DEC 2024 to 23 JAN 2025

EC-3, 26 DEC 2024 to 23 JAN 2025