

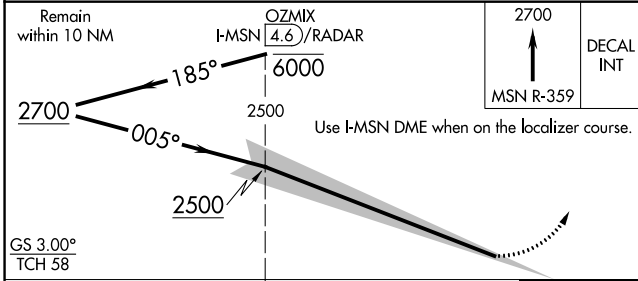
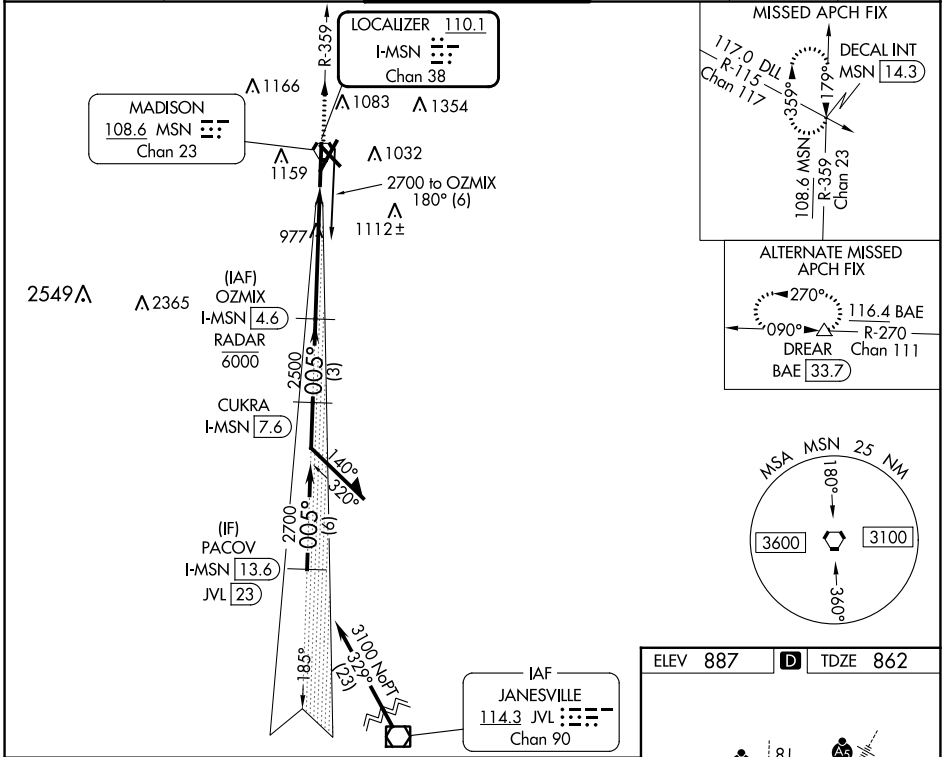
LOC/DME I-MSN <b>110.1</b> Chan <b>38</b>	APP CRS <b>005°</b>	Rwy Idg <b>8005</b> TDZE <b>862</b> Apt Elev <b>887</b>
---	------------------------	--

# ILS RWY 36 (SA CAT I)

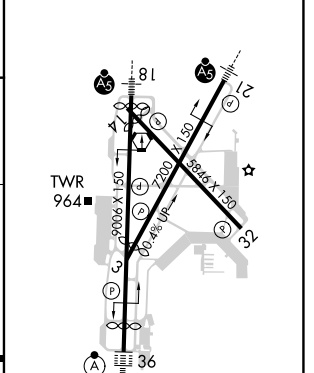
DANE COUNTY RGNL/TRUAX FLD (MSN)

DME or RADAR required.		ALSIF-2	MISSED APPROACH: Climb to 2700 on MSN VORTAC R-359 to DECAL INT/MSN 14.3 DME and hold.		
	Requires specific OPSPEC, MSPEC, or LOA approval and use of HUD to DH. Procedure NA when tower closed.				

ATIS <b>124.65 278.3</b>	MADISON APP CON * <b>135.45 343.7</b>	MADISON TOWER * <b>119.3 (CTAF) 0 257.8</b>	GND CON <b>121.9 348.6</b>	CLNC DEL <b>121.625</b>	UNICOM <b>122.95</b>
-----------------------------	--	--	-------------------------------	----------------------------	-------------------------



ELEV 887	<b>D</b>	TDZE 862
----------	----------	----------



CATEGORY	A	B	C	D
S-ILS 36	RA 159/14 150 DA 1012			
<b>SA CATEGORY I ILS - SPECIAL AIRCREW &amp; AIRCRAFT CERTIFICATION REQUIRED</b>				

HIRL all Rwy's  
REIL Rwy's 3, 14 and 32

EC-3, 26 DEC 2024 to 23 JAN 2025

EC-3, 26 DEC 2024 to 23 JAN 2025