

WAAS CH <b>42829</b> <b>W21A</b>	APP CRS <b>212°</b>	Rwy Idg TDZE <b>887</b> Apt Elev <b>887</b>	<b>7015</b>
--	------------------------	---	-------------

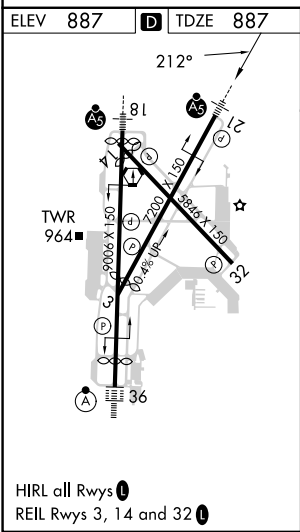
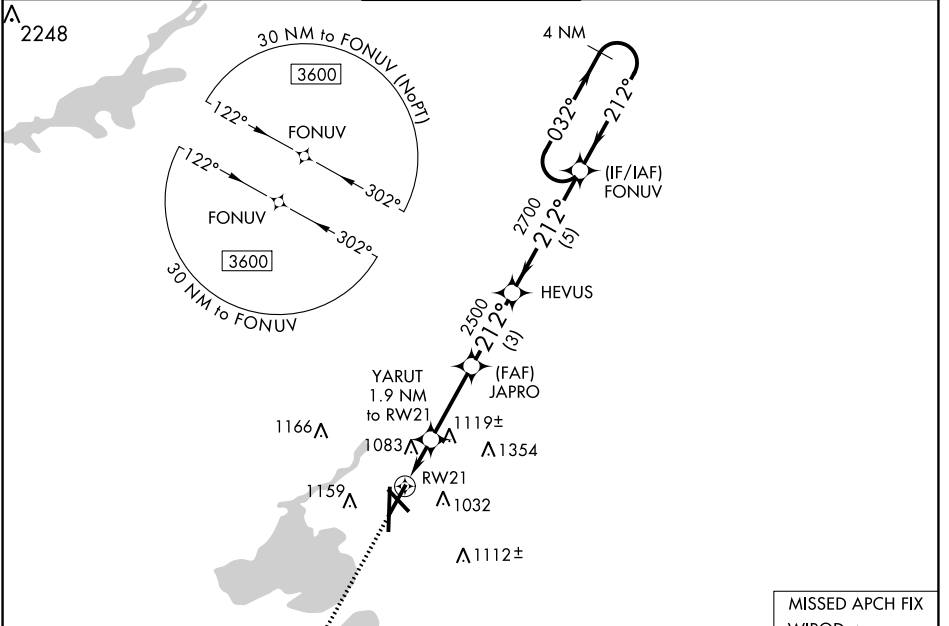
**RNAV (GPS) RWY 21**  
DANE COUNTY RGNL/TRUAX FLD (MSN)

**⚠** For uncompensated Baro-VNAV systems, LNAV/VNAV NA below -20°C (-4°F) or above 54°C (130°F). DME/DME RNP-0.3 NA. For inop MALSR, increase LNAV/VNAV all Cats visibility to 1¾ mile and LNAV Cat C/D visibility to 1½ mile.



**MISSED APPROACH:**  
Climb to 3600 direct WIROD and hold.

ATIS <b>124.65 278.3</b>	MADISON APP CON * <b>135.45 343.7</b>	MADISON TOWER * <b>119.3 (CTAF) 0 257.8</b>	GND CON <b>121.9 348.6</b>	CLNC DEL <b>121.625</b>	UNICOM <b>122.95</b>
-----------------------------	--	--	-------------------------------	----------------------------	-------------------------



ELEV 887	TDZE 887	MISSED APCH FIX WIROD			
3600	WIROD	* LNAV only	FONUV	4 NM	Holding Pattern
YARUT 1.9 NM to RW21	JAPRO 2500	HEVUS	2700	032°	3600
* 1.4 NM to RW21	* 1540	2500	212°	032°	GP 3.00° TCH 53
1.4 NM	0.5	3 NM	5 NM		
CATEGORY	A	B	C	D	
LPV DA	1087-½		200 (200-½)		
LNAV/VNAV DA	1412-1¾		525 (600-1¾)		
LNAV MDA	1380-½		1380-1		493 (500-1)
CIRCLING	1420-1	1460-1	1460-1½	1700-2¾	533 (600-1) 573 (600-1) 573 (600-1½) 813 (900-2¾)

EC-3, 26 DEC 2024 to 23 JAN 2025

EC-3, 26 DEC 2024 to 23 JAN 2025