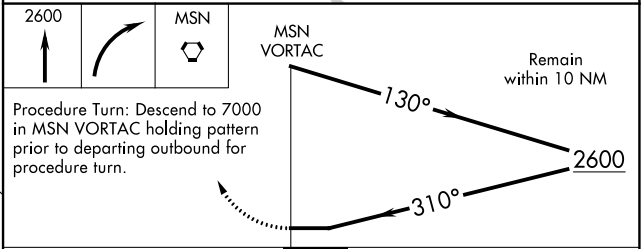
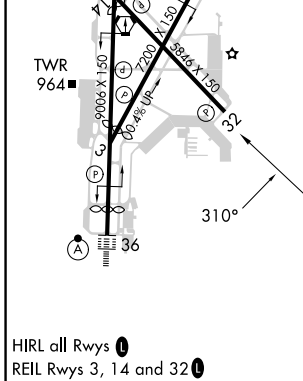
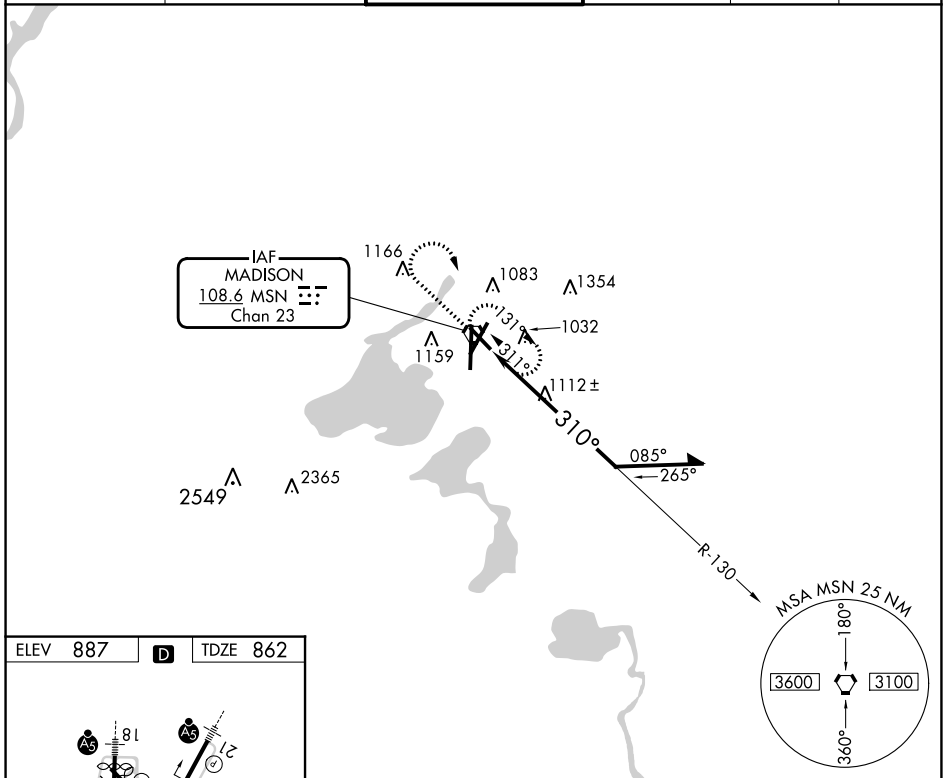


VORTAC MSN 108.6 Chan 23	APP CRS 310°	Rwy Idg 5846 TDZE 862 Apt Elev 887
--	------------------------	---

VOR RWY 32
DANE COUNTY RGNL/TRUAX FLD (MSN)

<p>⚠ When VGSi inop, Straight-In and Circling Rwy 32 procedures NA at night. Visibility reduction by helicopters NA.</p>		<p>MISSED APPROACH: Climb to 2600 then right turn direct MSN VORTAC and hold.</p>			
ATIS 124.65 278.3	MADISON APP CON * 135.45 343.7	MADISON TOWER * 119.3 (CTAF) 0 257.8	GND CON 121.9 348.6	CINC DEL 121.625	UNICOM 122.95



CATEGORY	A	B	C	D
S-32	1560-1	698 (700-1)	1560-2	698 (700-2)
C CIRCLING	1560-1	673 (700-1)	1560-2 673 (700-2)	1700-2¾ 813 (900-2¾)

EC-3, 26 DEC 2024 to 23 JAN 2025

EC-3, 26 DEC 2024 to 23 JAN 2025