

LOC/DME I-MHT <b>109.1</b> Chan 28	APP CRS <b>352°</b>	Rwy Idg TDZE Apt Elev	<b>7650</b> <b>265</b> <b>266</b>
--	------------------------	-----------------------------	---

# ILS RWY 35 (CAT II & III)

MANCHESTER BOSTON RGNL (MHT)

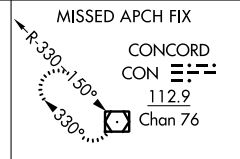
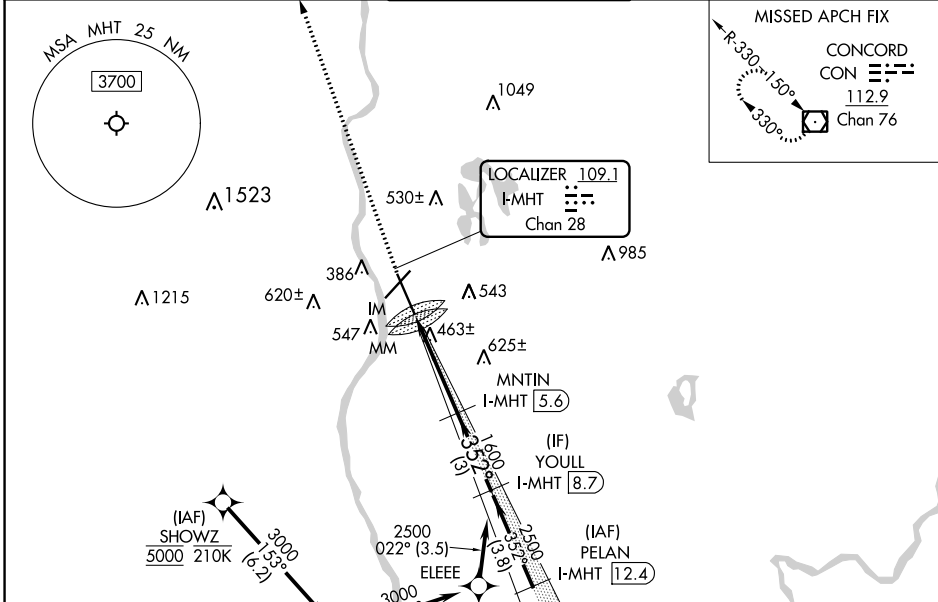
From SHOWZ: RNAV 1-DME/DME/IRU or GPS required.  
DME or RADAR required.

ALSIF-2

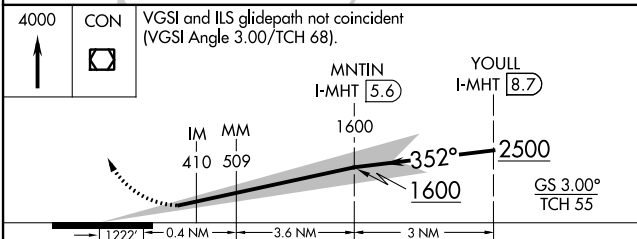
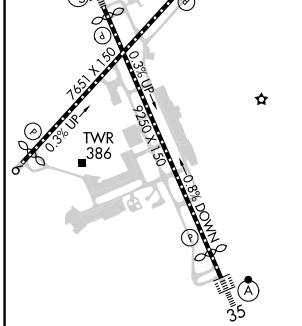
MISSED APPROACH: Climb to 4000 direct CON VOR/DME and hold.

Rwy 35 helicopter visibility reduction below RVR 4000 NA.

ATIS <b>119.55</b>	BOSTON APP CON <b>124.9 269.075</b>	MANCHESTER TOWER <b>121.3 239.025</b>	GND CON <b>121.9</b>	CLNC DEL <b>135.9</b>
-----------------------	--	--	-------------------------	--------------------------



ELEV 266	<b>D</b>	TDZE 265
----------	----------	----------



CATEGORY	A	B	C	D
S-ILS 35	CAT II RA 101/12 100 DA 365			
S-ILS 35	CAT III RVR 700			

## CATEGORY II & III ILS - SPECIAL AIRCREW & AIRCRAFT CERTIFICATION REQUIRED

REIL Rws 6 and 24  
TDZ/CL Rwy 17 and 35  
HIRL Rws 6-24 and 17-35

NE-1, 26 DEC 2024 to 23 JAN 2025

NE-1, 26 DEC 2024 to 23 JAN 2025