

(MFR1.LMT) 24305

AL-251 (FAA)

ROGUE VALLEY INTL/MEDFORD (MFR)  
MEDFORD, OREGON

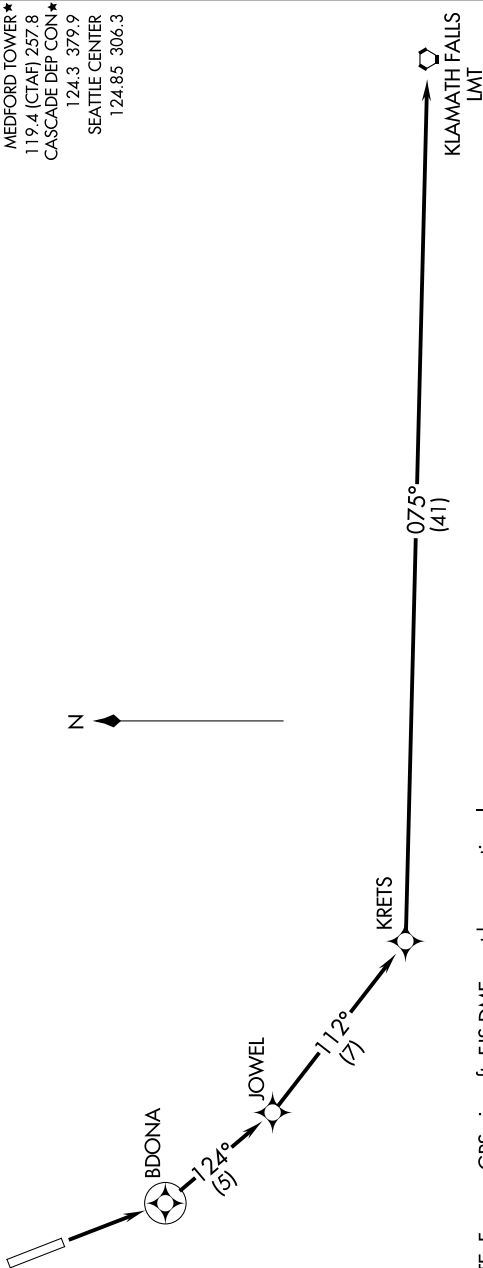
# KLAMATH FALLS ONE DEPARTURE (RNAV)

NW-1, 26 DEC 2024 to 23 JAN 2025

RNAV 1 - DME/DME/IRU or GPS.  
RADAR required for non-GPS equipped aircraft.

**TOP ALTITUDE:  
ASSIGNED BY ATC**

ATIS 127.25  
GND CON 121.8  
MEDFORD TOWER\* 119.4 (CTAF) 257.8  
CASCADE DEP CON\* 124.3 379.9  
SEATTLE CENTER 124.85 306.3



NOTE: For non-GPS aircraft, F/S DME must be operational.

**TAKEOFF MINIMUMS**

Rwy 14: Standard with minimum climb of 425' per NM to 6400.

NOTE: Chart not to scale.

## DEPARTURE ROUTE DESCRIPTION

**TAKEOFF RUNWAY 14:** Climb direct BDONA, then on track 124° to JOWEL, then on track 112° to KRETS, then on track 075° to LMT VORTAC. Expect RADAR vectors on course. Maintain assigned altitude. Expect filed altitude five minutes after departure.

# KLAMATH FALLS ONE DEPARTURE (RNAV)

(MFR1.LMT) 29DEC22

MEDFORD, OREGON  
ROGUE VALLEY INTL/MEDFORD (MFR)

NW-1, 26 DEC 2024 to 23 JAN 2025