

(MLB7.MLB) 24081

AL-252 (FAA)

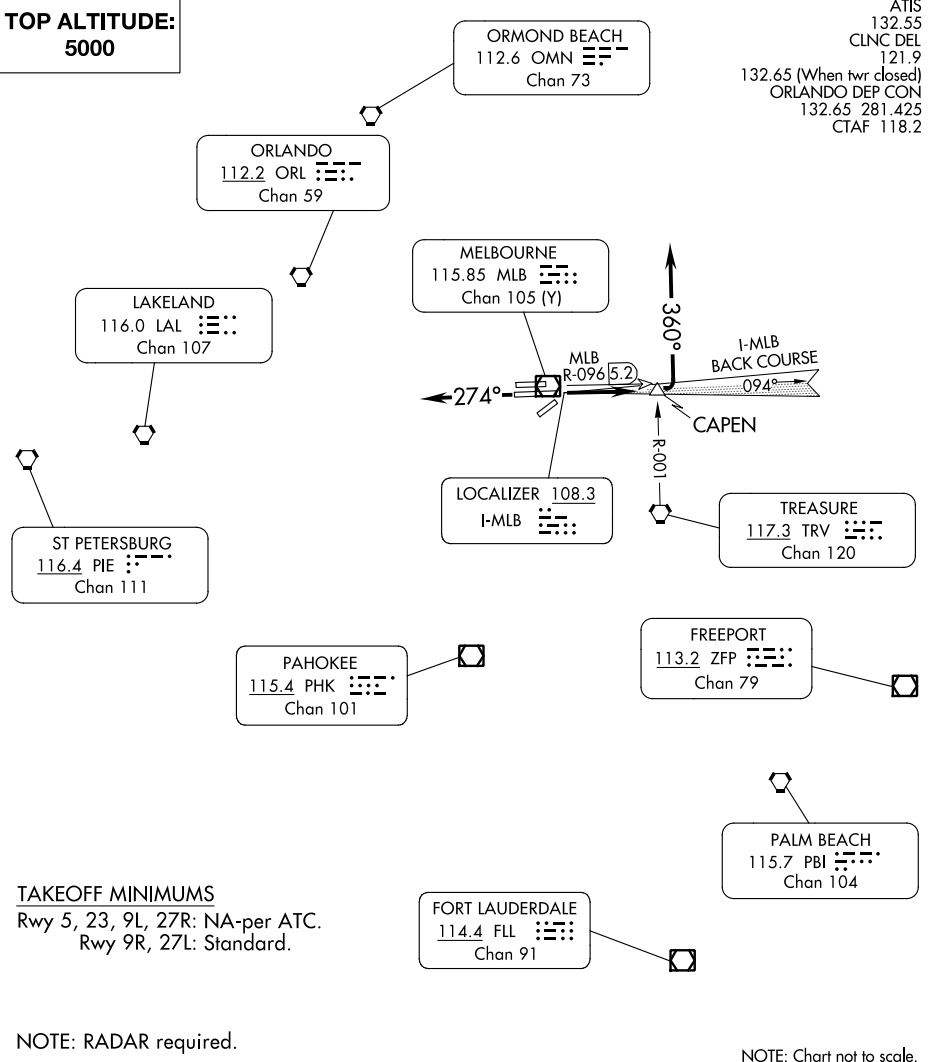
MELBOURNE ORLANDO INTL (MLB)

MELBOURNE SEVEN DEPARTURE

MELBOURNE, FLORIDA

**TOP ALTITUDE:
5000**

ATIS
132.55
CLNC DEL
121.9
132.65 (When twr closed)
ORLANDO DEP CON
132.65 281.425
CTAF 118.2



TAKEOFF MINIMUMS
Rwy 5, 23, 9L, 27R: NA-per ATC.
Rwy 9R, 27L: Standard.

NOTE: RADAR required.

NOTE: Chart not to scale.

DEPARTURE ROUTE DESCRIPTION

TAKEOFF RUNWAY 9R: Climb on MLB VOR/DME R-096 to CAPEN INT/MLB VOR/DME 5.2 DME, then turn left heading 360°, thence. . . .

TAKEOFF RUNWAY 27L: Climb heading 274°, thence. . . .

. . . .all aircraft expect RADAR vectors to join assigned route. Maintain 5000 or assigned altitude. Expect clearance to filed altitude/flight level 10 minutes after departure.

MELBOURNE SEVEN DEPARTURE

(MLB7.MLB) 19JUL18

MELBOURNE, FLORIDA
MELBOURNE ORLANDO INTL (MLB)

SE-3, 26 DEC 2024 to 23 JAN 2025

SE-3, 26 DEC 2024 to 23 JAN 2025