

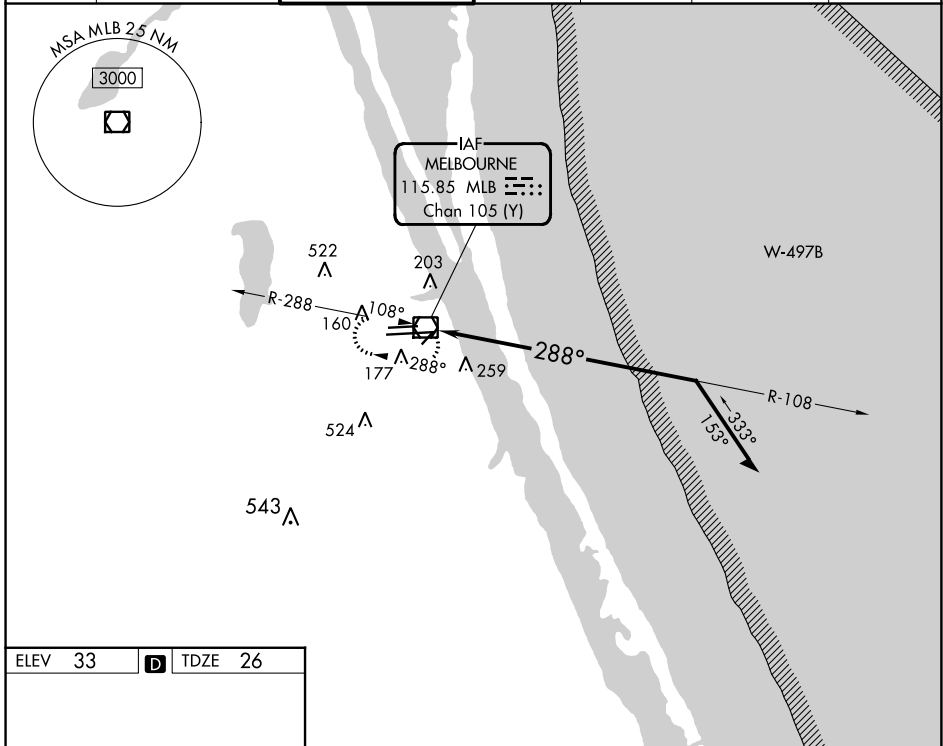
VOR/DME MLB	APP CRS	Rwy Idg	9482
115.85	288°	TDZE	26
Chan 105 (Y)		Apt Elev	33

# VOR RWY 27L

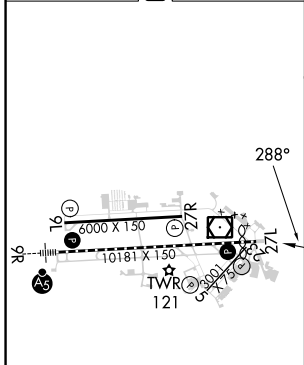
MELBOURNE ORLANDO INTL (MLB)

		MISSED APPROACH: Climb to 1000 then climbing left turn to 2100 direct MLB VOR/DME and hold.				
--	--	---	--	--	--	--

ATIS	ORLANDO APP CON	MELBOURNE TOWER ★	GND CON	CLNC DEL	CLNC DEL	UNICOM
132.55	132.65 281.425	118.2 (CTAF) 257.8	121.9	121.9	132.65 (When twr closed)	122.95



ELEV 33	<b>D</b>	TDZE 26
---------	----------	---------



REIL Rwy 27L  
HIRL Rwy 9R-27L  
MIRL Rwy 5-23 and 9L-27R  
TDZ/CL Rwy 9R

1000, 2100, MLB

MLB VOR/DME

108°, 1600, 288°, 1.7

Remain within 10 NM

0.2 | 1.5 NM

CATEGORY	A	B	C	D
S-27L	560-1	534 (600-1)	560-1½	534 (600-1½)
<b>C</b> CIRCLING	560-1	527 (600-1)	680-1¾ 647 (700-1¾)	880-2¾ 847 (900-2¾)

SE-3, 26 DEC 2024 to 23 JAN 2025

SE-3, 26 DEC 2024 to 23 JAN 2025